

**PENNINGTON COUNTY
BOARD OF COMMISSIONER'S MEETING
JUSTICE CENTER – COUNTY BOARD ROOM
TUESDAY, OCTOBER 10TH, 2023, 10:00 A.M.**

AGENDA

- 1. Call to Order**
- 2. Pledge of Allegiance**
- 3. Amendments to the Agenda**
- 4. Recognition of Citizens** – Individual's present may address the Board about items not on the regular agenda; no action on these items is required at this time.
- 5. Approval of the Board minutes; bills**
- 6. Regular Agenda**
 - 10:05 Hoffman, Phillip, & Martell, PLLC
- 2022 Audit review
 - 10:20 Seth Vettleson – County Sheriff
 - 10:30 Mike Flaagan – County Engineer (via Zoom)
- 7. County Auditor-Treasurer Items**
- 8. County Coordinator Items**
- 9. County Attorney Items**
- 10. Committee Reports / Commissioner Updates**

11. Adjournment

**OFFICIAL PROCEEDINGS
PENNINGTON COUNTY BOARD OF COMMISSIONERS
JUSTICE CENTER BOARD ROOM
SEPTEMBER 26TH, 2023 – 10:00 A.M.**

Pursuant to adjournment, the Pennington County Board of Commissioners met in the Pennington County Justice Center Board Room in Thief River Falls, MN, on Tuesday, September 26th, 2023, at 10:00 a.m. Members Present: Seth Nelson, Bruce Lawrence, Neil Peterson, David Sorenson, and Roy Sourdif. Members absent: None.

The meeting was called to order by Chairman Peterson and the Pledge of Allegiance was recited.

The Chairman asked if there were any amendments to the agenda. The County Coordinator noted that Sheriff Vettleson can be removed from the agenda. Motioned by Commissioner Sorenson, seconded by Commissioner Nelson, to approve the Board agenda with the change presented. Motion carried.

Recognition of Citizens: None.

Motioned by Commissioner Lawrence, seconded by Commissioner Sourdif, to approve the Board minutes of September 12th, 2023, as presented. Motion carried.

Motioned by Commissioner Nelson, seconded by Commissioner Sorenson, to approve the Human Services warrants totaling \$307,761.14 and the following Commissioner warrants. Motion carried.

County Revenue	\$43,632.70
Road & Bridge	\$14,646.07
Solid Waste Facility	\$ 10.00
Ditch Funds	\$19,265.00

Per diems and meal reimbursements in the amount of \$43.20 were also approved.

Charity Brault – Executive Director, and Heather Harbott – Finance Manager, of the NW MN Multi-County Housing and Redevelopment Authority, provided an annual update to the Board. They noted that recent legislation approved their levy authority through 2032. Ms. Brault noted that they levy in six counties and calculate their revenues from taxable market values. Ms. Harbott discussed the revenues and expenditures for 2023 year to date. The rental rehabilitation and small cities development programs were discussed, and it was noted that \$50,000 is committed from the levy to Thief River Falls for rental rehab. The Pennington County down payment assistance program was a part of 15 home purchases in fiscal 2023, involving 6 different lending institutions and a total of \$112,250. The Section 8 housing choice rental program assisted with rent for about 95 families each month in 8 counties, averaging \$373.00 each with payments going directly to landlords. Commissioner Lawrence questioned if the vouchers per month are increasing, as the ratio in Pennington County seems high in comparison to other counties.

Ms. Harbott replied that overall, the program is decreasing, but they would have to research that to be certain. The Board thanked them for their report.

Human Services Director Julie Sjostrand presented the consent agenda from the September 19th, 2023, Human Service Committee meeting. On a motion by Commissioner Sourdif and seconded by Commissioner Sorenson, the following recommendations of the Pennington County Human Service Committee for September 19, 2023 (detailed minutes on record) are hereby adopted:

SECTION A

- I. To approve the August 15, 2023, Human Service Committee Meeting minutes.
- II. To approve the agency's personnel action as presented.
- III.
 - A. To approve the CY 2024 Rural Transportation Collaborative access transportation Service Contract with Tri-Valley Opportunity Council, Inc. as presented.
 - B. To approve the CY 2024 Purchase of Service Agreement with the Occupational Development Center as presented.
 - C. To approve the CY 2024-25 MFIP/DWP Employment Services Purchase of Service Agreement with the Career Force Center as presented.
 - D. To approve the CaseWorks Residential Self-Service Portal.

SECTION B

- I. To approve payment of the Agency's bills.

County Engineer Mike Flaagan presented the following items:

Motioned by Commissioner Lawrence, seconded by Commissioner Nelson, to approve the transfer of Kyle Wikert from Highway Equipment Operator to Lead Highway Equipment Operator effective September 27th, 2023, at Step 2 of the union contract wage schedule. Following discussion on the position and interviews conducted, the motion was carried.

Engineer Flaagan noted that a used tractor trailer was sold on auction this spring, and they have received the following quotes for another used tractor trailer: Allstate Peterbilt of Fargo – Peterbilt truck with 411k miles for \$84,990; J&M Truck Sales Inc. – Mack truck with 616k miles for \$64,900 (\$59,900 after \$5k discount), also a Western Star truck with 473,700 miles for \$69,900. Motioned by Commissioner Lawrence, seconded by Commissioner Sourdif, to authorize the purchase of a Western Star tractor trailer from J&M Truck Sales Inc. at the quoted price of \$69,900. Motion carried.

Engineer Flaagan noted he has received two quotes for a 9'2" plow for the new Silverado HD 2500 pickup truck:

Bert's Truck Equipment	\$10,668.00
------------------------	-------------

Northwest Power Systems

\$11,293.89

Engineer Flaagan recommended the local quote of Northwest Power System. Motioned by Commissioner Lawrence, seconded by Commissioner Sorenson, to approve the purchase of a snowplow from Northwest Power Systems in the amount of \$11,293.89. Motion carried.

Engineer Flaagan voiced his concerns over the delays in truck production and deliveries, stating we could order one in November this year and likely not receive it in 2024. He proposed the idea of ordering two trucks once the state bids are available, and paying for each in the year they arrive. The Highway Committee will review state bids when they are available and may consider ordering more than one truck at a time.

Engineer Flaagan provided an update on local projects, noting that reclamation on CSAH #7 will begin this week with paving to follow the week after, and then shouldering.

Carter Nelson met with the Board via Zoom and stated that he is considering purchasing the Northland Village apartments in TRF. He stated that they are in poor condition, are estimated at 70% vacant, and he would completely remodel them. He would like to make them market value and release them from HUD, eliminating the associated income guidelines. He noted that \$259,355.15 is currently owed for 2022 and 2023 taxes and utilities, with approximately \$119,331 outstanding for property taxes. He requested that the county forgive the property taxes owed so he can put such funds into the remodel of the building. Discussion was held on the amounts owed for taxes and utilities, with Mr. Nelson noting that the City of TRF told him responsibility for delinquent utilities would remain with the current owner. Mr. Nelson will follow up with the County Board at a future meeting.

Auditor-Treasurer Items:

Motioned by Commissioner Nelson, seconded by Commissioner Sorenson, to approve a quote by Government Management Group for preparation of the county's Central Services Cost Allocation plans for fiscal years ending 2023, 2024, 2025, 2026, and 2027 at an annual cost of \$3,750. Motion carried.

County Auditor-Treasurer Jennifer Herzberg discussed the 2024 budget, noting that a significant portion of increases are due to wages and benefits. She discussed a 7% levy for 2024, noting that based on the current tax capacity, tax rates would decrease 3% for 2024. The Board thanked the Auditor-Treasurer and all department heads for their work on the 2024 budget.

Motioned by Commissioner Sourdif, seconded by Commissioner Sorenson, to approve the following resolution, the 2024 proposed levy of 7.0%, and the County budget as written. Motion carried.

RESOLUTION

WHEREAS, the Pennington County Board of Commissioners have reviewed the 2024 budgets submitted by the various departments; and

WHEREAS, the proposed levies have been reduced by the amount to be received from the State of Minnesota for the following: County Program Aid - \$1,100,630 (estimated).

NOW, THEREFORE, BE IT RESOLVED, that the proposed budgets for 2024 are approved and that the following proposed levies be adopted:

	Levy Before CPA	CPA*	Net Levy After CPA
Revenue	\$8,157,652	\$722,013	\$7,432,639
Road and Bridge	\$1,754,879	\$155,189	\$1,599,690
Welfare	\$2,531,366	\$223,428	\$2,307,938
G.O. Jail Bond	\$755,167	0	\$755,167
G.O. Justice Center CIP Bond	\$380,415	0	\$380,415

*County Program Aid

Motioned by Commissioner Lawrence, seconded by Commissioner Nelson, to change the time of the December 12th, 2023, County Board meeting from 10:00 a.m. to 5:00 p.m. Motion carried.

Motioned by Commissioner Sourdif, seconded by Commissioner Sorenson, to schedule a Truth in Taxation meeting for 6:00 p.m. on December 12th, 2023, in the Justice Center Board Room. Motion carried.

Motioned by Commissioner Nelson, seconded by Commissioner Lawrence, to change the date of the last Board meeting of the year from December 26th, 2023, to December 28th, 2023. Motion carried.

The Auditor-Treasurer reminded the Board members that there will be a joint City, County, and School meeting on October 30th, 2023, at 5:30 p.m. in the Imperial Room of the Ralph Engelstad Arena.

Kayla Jore – Director of Pennington/RLC Public Health & Home Care, presented an update to the Board. She thanked the Board for their partnership and support of this year’s ‘Be The Voice’ event, which was a great success and featured a great speaker. She stated the Opioid Committee is down to some core members who plan to meet monthly. Their discussion has focused on families that would benefit from the program and she noted that any participants will have to sign confidentiality agreements. To date, no opioid settlement funds have been spent. The Committee continues to research the gaps and needs of the community to determine where funding should be spent.

County Coordinator Items:

Motioned by Commissioner Sourdif, seconded by Commissioner Nelson, to approve issuance of a duplicate warrant to Dawn Fore in the amount of \$2.00 to replace lost

warrant #186440, dated July 3rd, 2019, without issuance of an indemnifying bond.
Motion carried.

County Attorney Items: None.

Committee Reports:

The Board members reported on their respective committee assignments from the recent AMC Conference:

Commissioner Sourdif – General Government: tax forfeitures were a large topic of discussion along with revisions to MN PERA disability coverage for the Police & Fire Plan.

Commissioner Lawrence – Public Safety: police officers in schools were discussed as well as emergency services member pay and funding to recruit for such positions. The Corrections Commissioner addressed the topic with statistics, noting that while the severe crimes are down, the age class of offenders is becoming younger at an alarming rate. Also discussed were prisoner parole and how many are eligible, and the reduction of prison sentences for some by up to 50%. Such changes would result in savings for the State of MN but an increase in county costs and additional work for probation agents.

Commissioner Nelson – Health & Human Services: the focus this year was mental health, sustainable funding for services, and modernization of software. They want to show the legislature how updates to the system would result in more efficiency and interest from job seekers.

Commissioner Peterson – Environmental & Natural Resources: The biggest topic of discussion was the drainage information portal. They also received reports from the State agencies.

Commissioner Sorenson stated that at a recent Advance Thief River meeting he learned that ERICCO Manufacturing is converting an old, onsite homestead into a daycare. The licensing should be completed next week and will allow for 10 children.

Motioned by Commissioner Sourdif, seconded by Commissioner Sorenson, to adjourn the Board meeting to September 26th, 2023, at 10:00 a.m. Motion carried.

ATTEST:

Kevin Erickson, County Coordinator
Pennington County

Neil Peterson, Chairman
Board of Commissioners

Pennington County Financial System



Print List in Order By: 1
1 - Fund (Page Break by Fund)
2 - Department (Totals by Dept)
3 - Vendor Number
4 - Vendor Name

Explode Dist. Formulas?: Y

Paid on Behalf Of Name
on Audit List?: N

Type of Audit List: D
D - Detailed Audit List
S - Condensed Audit List

Save Report Options?: N

DRAFT

Pennington County Financial System



Danielle
10/9/23 1:04PM

Audit List for Board **COMMISSIONER'S VOUCHERS ENTRIES**

Page 2

1 County Revenue

Vendor No.	Name Account/Formula	Rpt Accr	Amount	Warrant Description Service Dates	Invoice # Paid On Bhf #	Account/Formula Description On Behalf of Name	1099
1011 ACE HARDWARE							
174	01-218-000-0000-6300		67.53	PAINTING SUPPLIES	143106	REPAIRS & MAINTENANCE	N
175	01-218-000-0000-6300		20.48	PAINTING SUPPLIES	143140	REPAIRS & MAINTENANCE	N
46	01-111-000-0000-6300		49.99	EXTENSION CORD	143305	REPAIRS & MAINTENANCE	N
45	01-111-000-0000-6300		4.99	THREAD SEALANT	143462	REPAIRS & MAINTENANCE	N
41	01-801-000-0000-6801		179.99	PUMP	14367	MISCELLANEOUS EXPENSE	N
42	01-801-000-0000-6801		18.99	WASHING MACHINE HOSE	14367	MISCELLANEOUS EXPENSE	N
43	01-501-000-0000-6300		10.99	SILICONE	143883	REPAIRS & MAINTENANCE	N
176	01-251-000-0000-6300		20.17	BATTERIES/HEX KEY SET	143930	REPAIRS & MAINTENANCE	N
177	01-251-000-0000-6302		5.59	HOSE/DRAIN GREASE PIT	144191	KITCHEN REPAIRS & EXPENSE	N
178	01-218-000-0000-6300		13.58	REPAIR DOOR/COURT ADMIN	144456	REPAIRS & MAINTENANCE	N
44	01-111-000-0000-6300		4.99	LED LIGHTS	144628	REPAIRS & MAINTENANCE	N
179	01-218-000-0000-6300		11.99	SEALANT/ROOFTOP UNIT	144842	REPAIRS & MAINTENANCE	N
1011	ACE HARDWARE		409.28	12 Transactions			
1306 ADVANCED CORRECTIONAL HEALTHCARE							
91	01-251-000-0000-6255		19,584.34	ON-SITE MEDICAL SERVICES-OCTOB	133664	MEDICAL - LOCAL	N
92	01-251-000-0000-6255		998.91	ON-SITE MENTAL HEALTH SERV-OCT	133664	MEDICAL - LOCAL	N
90	01-251-000-0000-6255		145.37	NURSING HOURS OVER	133892	MEDICAL - LOCAL	N
88	01-251-000-0000-6255		19,584.34	ON-SITE MEDICAL SERVICES-NOV	134442	MEDICAL - LOCAL	N
89	01-251-000-0000-6255		998.91	ON-SITE MENTAL HEALTH SERV-OCT	134442	MEDICAL - LOCAL	N
1306	ADVANCED CORRECTIONAL HEALTHCARE		41,311.87	5 Transactions			
999999997 ALTENDORF/PRESTON							
18	01-251-000-0000-6420		92.98	UNIFORM ALLOWANCE REIMBURSEMEN		JAILER UNIFORMS	N
999999997	ALTENDORF/PRESTON		92.98	1 Transactions			
1347 Amazon Capital Services							
291	01-259-000-0000-6801		101.64	PROGRAMMING-PUZZLES	139M-4DKM-C463	MISCELLANEOUS EXPENSE - CANTI	N
296	01-041-000-0000-6801		109.69	LANGUAGE TRANSLATER	13JQ-FJC4-1FFN	MISCELLANEOUS EXPENSE - AUDIT	N
20	01-201-000-0000-6405		69.88	TACTICAL CASE	13W3-4KDK-MW9W	GENERAL SUPPLIES	N
21	01-201-000-0000-6405		7.48	FAT32 FLASH DRIVE	13W3-4KDK-QWMV	GENERAL SUPPLIES	N
292	01-251-000-0000-6405		69.36	TV REMOTES, FAN	13WV-X3RG-CXJ7	GENERAL SUPPLIES - JAIL	N
23	01-201-000-0000-6405		8.00	USB FLASH	19QH-H4WL-R39P	GENERAL SUPPLIES	N
22	01-251-000-0000-6405		74.45	HP INK/DC	1DPN-C134-R6KF	GENERAL SUPPLIES - JAIL	N
35	01-061-000-0000-6401		40.00	DYMO LABELS	1H4R-YNFF-FRVY	SUPPLIES-ELECTION	N
19	01-259-000-0000-6801		11.99	PROGRAMMING-JUMP ROPES	1L67-J9MY-6DVK	MISCELLANEOUS EXPENSE - CANTI	N
1347	Amazon Capital Services		492.49	9 Transactions			
2360 BENSON/ASHLEY							

Pennington County Financial System



Danielle
10/9/23 1:04PM

Audit List for Board **COMMISSIONER'S VOUCHERS ENTRIES**

1 County Revenue

Vendor No.	Name Account/Formula	Rpt Accr	Amount	Warrant Description Service Dates	Invoice # Paid On Bhf #	Account/Formula Description On Behalf of Name	1099
182	01-106-000-0000-6330		533.19	MILEAGE 9/19-10-3		TRAVEL & EXPENSE	N
183	01-106-000-0000-6330		200.00	MAAO WORKSHOP - LAKE ELMO		TRAVEL & EXPENSE	N
184	01-106-000-0000-6330		315.66	HOLIDAY INN - LAKE ELMO		TRAVEL & EXPENSE	N
2360	BENSON/ASHLEY		1,048.85	3 Transactions			
999999997	BRAATEN/PAT						
180	01-251-000-0000-6420		75.00	UNIFORM ALLOWANCE REIMBURSEMEN		JAILER UNIFORMS	N
999999997	BRAATEN/PAT		75.00	1 Transactions			
2050	BREDESON SUPPLY						
5	01-601-000-0000-6401		19.95	ENVELOPES	212523	SUPPLIES - EXTENSION	N
40	01-121-000-0000-6401		271.80	OFFICE SUPPLIES	212542	SUPPLIES - VETS SERVICE	N
1	01-101-000-0000-6401		18.95	NOTARY STAMP - J. HANSON	212543	SUPPLIES - RECORDER	N
2	01-101-000-0000-6401		15.95	STAMP - WELL DISCLOSURE	212543	SUPPLIES - RECORDER	N
6	01-041-000-0000-6401		18.95	NOTARY STAMP	212544	SUPPLIES - AUDITOR	N
2050	BREDESON SUPPLY		345.60	5 Transactions			
2322	BRUZEK/CARL						
30	01-106-000-0000-6241		525.00	FALL CONFERENCE MAAO 9/24-927		DUES - ASSESSOR	N
190	01-106-000-0000-6241		525.00	MAAO FALL CONFERENCE		DUES - ASSESSOR	N
191	01-106-000-0000-6330		335.01	HOTEL - MAAO FALL CONFERENCE		TRAVEL & EXPENSE	N
192	01-106-000-0000-6330		64.56	MILEAGE - 7/14-10/4		TRAVEL & EXPENSE	N
2322	BRUZEK/CARL		1,449.57	4 Transactions			
3352	CHARM-TEX INC						
79	01-251-000-0000-6405		565.90	PANTIES/GOLF PENCILS/ADMIN KIT	327146	GENERAL SUPPLIES - JAIL	N
80	01-251-000-0000-6405		618.80	SPORTS BAR VARIOUS SIZES	332033	GENERAL SUPPLIES - JAIL	N
78	01-251-000-0000-6405		199.80	MAXIOADS	332737	GENERAL SUPPLIES - JAIL	N
77	01-251-000-0000-6405		197.80	DISPENSING CUPS	335156	GENERAL SUPPLIES - JAIL	N
81	01-251-000-0000-6405		171.70	SANDALS/PROPERTY BAGS	336543	GENERAL SUPPLIES - JAIL	N
3352	CHARM-TEX INC		1,754.00	5 Transactions			
3311	COLE PAPERS, INC.						
32	01-111-000-0000-6403		67.83	LYSOL WIPES - GC	10347942	JANITORIAL SUPPLIES - COURTHOL	N
34	01-111-000-0000-6403		7.00	PROCESSING FEE	10347942	JANITORIAL SUPPLIES - COURTHOL	N
33	01-218-000-0000-6403		67.83	LYSOL WIPES - JC	10347942	JANITORIAL SUPPLIES	N
223	01-111-000-0000-6403		310.20	CLEANING CART	10350928	JANITORIAL SUPPLIES - COURTHOL	N
224	01-111-000-0000-6403		7.00	PROCESSING FEE	10350928	JANITORIAL SUPPLIES - COURTHOL	N
3311	COLE PAPERS, INC.		459.86	5 Transactions			

Pennington County Financial System



Danielle
10/9/23 1:04PM

Audit List for Board **COMMISSIONER'S VOUCHERS ENTRIES**

1 County Revenue

Vendor No.	Name Account/Formula	Rpt Accr	Amount	Warrant Description Service Dates	Invoice # Paid On Bhf #	Account/Formula Description On Behalf of Name	1099
4355	DACOTAH PAPER						
73	01-251-000-0000-6403		3,360.91	CAN LINERS/TISSUE/TOWEL/SOAP	38268	JANITORIAL SUPPLIES - JAIL	N
74	01-251-000-0000-6403		513.76	SOAP	44821	JANITORIAL SUPPLIES - JAIL	N
4355	DACOTAH PAPER		3,874.67	2 Transactions			
999999997	DAKOTA WHOLESALE TIRE						
27	01-201-000-0000-6304		493.16	4 TIRES - #01	699401	REPAIR & MAINTENANCE - SQUADS	N
999999997	DAKOTA WHOLESALE TIRE		493.16	1 Transactions			
13483	DEPT OF CORRECTIONS FINANCIAL SERVI						
75	01-251-000-0000-6801		2,062.00	INMATE WAGES JULY	758063	MISCELLANEOUS EXPENSE - JAIL	N
76	01-251-000-0000-6801		1,844.75	INMATE WAGES AUGUST	758739	MISCELLANEOUS EXPENSE - JAIL	N
13483	DEPT OF CORRECTIONS FINANCIAL SERVI		3,906.75	2 Transactions			
6303	F-M AMBULANCE INC						
64	01-251-000-0000-6255		50.00	TRF BLOOD DRAW	23-28504	MEDICAL - LOCAL	N
65	01-251-000-0000-6255		50.00	TRF BLOOD DRAW	23-29003	MEDICAL - LOCAL	N
6303	F-M AMBULANCE INC		100.00	2 Transactions			
6006	FARMERS UNION OIL						
289	01-201-000-0000-6560		2,168.56	GAS FOR SQUADS - SEPTEMBER	697178	GAS & DIESEL	N
290	01-255-000-0000-6330		100.90	FUEL-STS	697207	TRAVEL & EXPENSE	N
6006	FARMERS UNION OIL		2,269.46	2 Transactions			
6305	FLAAGAN/JODI						
7	01-013-000-0000-6853		3,220.00	92 HRS @ \$35/HR TZD GRANT		TOWARD ZERO DEATH GRANT	Y
8	01-013-000-0000-6853		7.86	SEPT MILEAGE - 12 @ .655	9/21/23	TOWARD ZERO DEATH GRANT	Y
6305	FLAAGAN/JODI		3,227.86	2 Transactions			
7317	GALLS, LLC						
173	01-201-000-0000-6420		159.96	AMMO HOLDER/VEST	25613218	UNIFORMS	N
7317	GALLS, LLC		159.96	1 Transactions			
8014	HUGOS #7						
49	01-003-000-0000-6330		19.47	FOOD FOR MEETING -COUNTY BOARD		TRAVEL & EXPENSE	N
47	01-003-000-0000-6330		10.59	FOOD FOR MEETING - ROOM A	1155	TRAVEL & EXPENSE	N
48	01-003-000-0000-6330		10.15	FOOD FOR MEETING -COUNTY BOARD	1155	TRAVEL & EXPENSE	N
8014	HUGOS #7		40.21	3 Transactions			
12323	LAWRENCE/BRUCE						

Pennington County Financial System



Danielle
10/9/23 1:04PM

Audit List for Board **COMMISSIONER'S VOUCHERS ENTRIES**

Page 5

1 County Revenue

Vendor No.	Name Account/Formula	Rpt Accr	Amount	Warrant Description Service Dates	Invoice # Paid On Bhf #	Account/Formula Description On Behalf of Name	1099
16	01-003-000-0000-6103		227.94	SEPT MILEAGE - 348 @ .655		PER DIEMS - BOARD	N
	12323 LAWRENCE/BRUCE		227.94	1 Transactions			
	13498 MARCO TECHNOLOGIES LLC						
53	01-091-000-0000-6301		129.74	EQ767167 MAINTENANCE	11670754	MAINTENANCE AGREEMENT	N
10	01-132-000-0000-6301		60.86	EQ465509 MAINTENANCE AGREEMENT	INV11641015	MAINTENANCE AGREEMENT	N
31	01-801-000-0000-6301		173.08	EQ1019556 MAINTENANCE	INV11660947	MAINTENANCE AGREEMENT	N
297	01-101-000-0000-6301		12.98	EQ442257 MAINTENANCE AGREEMENT	INV11693143	MAINTENANCE AGREEMENT	N
	13498 MARCO TECHNOLOGIES LLC		376.66	4 Transactions			
	13226 MCKESSON MEDICAL SURGICAL						
87	01-251-000-0000-6255		182.21	SPONGE/LICE TREAT	21016503	MEDICAL - LOCAL	N
	13226 MCKESSON MEDICAL SURGICAL		182.21	1 Transactions			
	13322 MINNESOTA STATE TREASURER						
62	01-101-000-0000-6801		16.50	REGISTERED LAND		MISCELLANEOUS EXPENSE - RECO	N
58	01-101-000-0000-6825		915.00	MARRIAGE SURCHARGE		MARRIAGE SURCHARGES MN - REC	N
61	01-101-000-0000-6827		1,732.50	RECORDER & REGISTRAR'S FEES		STATE SURCHARGES	N
57	01-101-000-0000-6829		165.00	CHILDREN'S SURCHARGE		CHILDREN SURCHARGE MN - RECO	N
59	01-101-000-0000-6831		468.00	BIRTH/DEATH SURCHARGE		BIRTH/DEATH CERTIF SURCHARGE	N
60	01-101-000-0000-6848		550.00	BIRTH RECORD SURCHARGE		BIRTH DEFECT SURCHARGE	N
	13322 MINNESOTA STATE TREASURER		3,847.00	6 Transactions			
	13355 MN COUNTIES COMPUTER COOP						
196	01-070-000-0000-6263		9,224.00	2023 4TH QTR PROPERTY TAX SUPP	2310043	COMPUTER SERVICES - DP	N
197	01-070-000-0000-6263		3,409.00	2023 4TH QTR CAMA USA MAINTENA	2310043	COMPUTER SERVICES - DP	N
198	01-070-000-0000-6263		1,333.08	2023 4TH QTR PAYMATE SUPPORT	2310043	COMPUTER SERVICES - DP	N
199	01-070-000-0000-6263		394.75	2023 4TH QTR CAP ASSETS SOFTWA	2310043	COMPUTER SERVICES - DP	N
200	01-804-000-0000-6262		1,078.00	TYLER TECH INPLEMENTATION SERV	2310082	OTHER SERVICES	N
	13355 MN COUNTIES COMPUTER COOP		15,438.83	5 Transactions			
	13035 MN COUNTY ATTORNEYS ASSN						
203	01-091-000-0000-6241		325.00	2023 ANNUAL CONFERENCE - SD	200010962	DUES	N
204	01-091-000-0000-6241		325.00	2023 ANNUAL CONFERENCE - ML	200010962	DUES	N
205	01-091-000-0000-6241		325.00	2023 ANNUAL CONFERENCE - SC	200010962	DUES	N
	13035 MN COUNTY ATTORNEYS ASSN		975.00	3 Transactions			
	13334 MN DEPARTMENT OF HEALTH						
295	01-101-000-0000-6826		425.00	3RD QRT WELL CERIFICATES		WELL DISCLOSURE CERTIFICATE	N

Pennington County Financial System



Danielle
10/9/23 1:04PM

Audit List for Board **COMMISSIONER'S VOUCHERS ENTRIES**

1 County Revenue

Vendor No.	Name	Account/Formula	Rpt	Accr	Amount	Warrant Description	Service Dates	Invoice #	Account/Formula Description	1099
								Paid On Bhf #	On Behalf of Name	
	13334	MN DEPARTMENT OF HEALTH			425.00		1 Transactions			
37	13460	MN ENERGY RESOURCES CORP								
		01-111-000-0000-6251			69.78	SERVICES - GC		4749260112	GAS - COURTHOUSE	N
	13460	MN ENERGY RESOURCES CORP			69.78		1 Transactions			
217	13425	MOTOROLA SOLUTIONS								
		01-223-000-0000-6202			1,410.00	VESTA MANAGED SERVICES - JUNE		230414445	TELEPHONE - E911	N
209		01-223-000-0000-6202			1,410.00	VESTA MANAGED SERVICES - OCT		8230385377	TELEPHONE - E911	N
210		01-223-000-0000-6202			1,410.00	VESTA MANAGED SERVICES - NOV		8230389263	TELEPHONE - E911	N
211		01-223-000-0000-6202			1,410.00	VESTA MANAGED SERVICES - DEC		8230393088	TELEPHONE - E911	N
212		01-223-000-0000-6202			1,410.00	VESTA MANAGED SERVICES - JAN		8230396397	TELEPHONE - E911	N
213		01-223-000-0000-6202			1,410.00	VESTA MANAGED SERVICES - FEB		8230399465	TELEPHONE - E911	N
214		01-223-000-0000-6202			1,410.00	VESTA MANAGED SERVICES - MAR		8230402556	TELEPHONE - E911	N
215		01-223-000-0000-6202			1,410.00	VESTA MANAGED SERVICES - APR		8230406641	TELEPHONE - E911	N
216		01-223-000-0000-6202			1,410.00	VESTA MANAGED SERVICES - MAY		8230409771	TELEPHONE - E911	N
218		01-223-000-0000-6202			1,410.00	VESTA MANAGED SERVICES - JULY		8230417790	TELEPHONE - E911	N
219		01-223-000-0000-6202			1,410.00	VESTA MANAGED SERVICES - AUG		8230420843	TELEPHONE - E911	N
	13425	MOTOROLA SOLUTIONS			15,510.00		11 Transactions			
3	14478	NELSON/SETH								
		01-003-000-0000-6330			39.30	SEPT MILEAGE - 60 MILES@.655			TRAVEL & EXPENSE	N
50		01-003-000-0000-6330			16.64	MEAL - AMC		09/13/23	TRAVEL & EXPENSE	N
51		01-003-000-0000-6330			17.45	MEAL - AMC		09/13/23	TRAVEL & EXPENSE	N
	14478	NELSON/SETH			73.39		3 Transactions			
55	14440	NORTHDALE OIL INC.								
		01-218-000-0000-6300			15.83	GAS/MOWER			REPAIRS & MAINTENANCE	N
54		01-201-000-0000-6560			1,477.41	FUEL-SQUADS /SEPTEMBER		90037	GAS & DIESEL	N
	14440	NORTHDALE OIL INC.			1,493.24		2 Transactions			
294	14042	NORTHWEST SERVICE COOPERATIVE								
		01-201-000-0000-6300			215.00	ASBESTOS SAMPLING - LEC		8557	REPAIRS & MAINTENANCE	N
	14042	NORTHWEST SERVICE COOPERATIVE			215.00		1 Transactions			
39	15323	OFFICE DEPOT								
		01-061-000-0000-6401			218.96	2 DYMO PRINTERS - DM, LF		330763232011	SUPPLIES-ELECTION	N
171		01-201-000-0000-6405			36.26	BINDER, LABELS, SHEETS		332460133001	GENERAL SUPPLIES	N
172		01-201-000-0000-6405			5.81	BINDER		332461775001	GENERAL SUPPLIES	N
170		01-201-000-0000-6405			11.28	BUSINESS CARDS		332461776001	GENERAL SUPPLIES	N

Pennington County Financial System



Danielle
10/9/23 1:04PM

Audit List for Board **COMMISSIONER'S VOUCHERS ENTRIES**

1 County Revenue

Vendor No.	Name	Rpt	Amount	Warrant Description	Invoice #	Account/Formula Description	1099
No.	Account/Formula	Accr		Service Dates	Paid On Bhf #	On Behalf of Name	
15323	OFFICE DEPOT		272.31				
				4 Transactions			
15329	OIL BOYZ EXPRESS LUBE INC						
25	01-201-000-0000-6304		118.00	MOUNT/BALANCE TIES #01	1544	REPAIR & MAINTENANCE - SQUADS	N
26	01-201-000-0000-6304		100.60	#13 OIL CHANGE/SERVICE	1706	REPAIR & MAINTENANCE - SQUADS	N
56	01-201-000-0000-6304		118.00	OIL CHANGE/#04	1743	REPAIR & MAINTENANCE - SQUADS	N
293	01-201-000-0000-6304		70.70	OIL CHANGE/#07	1937	REPAIR & MAINTENANCE - SQUADS	N
15329	OIL BOYZ EXPRESS LUBE INC		407.30				
				4 Transactions			
16359	PENNINGTON COUNTY CRIME VICTIM						
28	01-270-000-0000-6262		170.50	SUPPLIES FOR VICTIMS FOR TRIAL	CK #1112	OTHER SERVICES-CRIME VICTIM	N
29	01-272-000-0000-6401		174.70	BULK PURCHASE OF BASIC NEEDS	CK# 1111	SUPPLIES - CRIME VICTIM	N
16359	PENNINGTON COUNTY CRIME VICTIM		345.20				
				2 Transactions			
16362	PETERSON/NEIL						
202	01-003-000-0000-6330		558.06	SEPTEMBER MILEAGE - 852 MILES		TRAVEL & EXPENSE	N
16362	PETERSON/NEIL		558.06				
				1 Transactions			
16448	PREMIUM WATERS, INC.						
38	01-801-000-0000-6401		46.98	WATER - SEPT	176590	SUPPLIES-UNALLOCATED	N
222	01-091-000-0000-6801		37.99	WATER - SEPT	176878-09-23	MISCELLANEOUS EXPENSE	N
168	01-251-000-0000-6801		133.99	WATER (16) BOTTLE DEPOSIT	341101845	MISCELLANEOUS EXPENSE - JAIL	N
169	01-220-000-0000-6801		59.99	WATER (6) BOTTLE DEPOSIT	341105490	MISCELLANEOUS EXPENSE	N
166	01-220-000-0000-6801		23.44	MONTHLY RENTAL/OCTOBER	341106945	MISCELLANEOUS EXPENSE	N
167	01-251-000-0000-6801		21.45	MONTHLY RENTAL/OCTOBER	341106945	MISCELLANEOUS EXPENSE - JAIL	N
16448	PREMIUM WATERS, INC.		323.84				
				6 Transactions			
16472	PROPHOENIX CORPORATION						
207	01-223-000-0000-6801		19,500.00	SOFTWARE/CAD	2023406	MISCELLANEOUS EXPENSE-E911	N
208	01-223-000-0000-6801		6,502.52	INTERFACES/CAD-PROJECT INITIAT	2023406	MISCELLANEOUS EXPENSE-E911	N
206	01-251-000-0000-6631		73,261.48	SOFTWARE/INTERFACES-JAIL	2023406	FURNITURE & EQUIPMENT - JAIL	N
16472	PROPHOENIX CORPORATION		99,264.00				
				3 Transactions			
14347	QUADIENT INC.						
9	01-801-000-0000-6301		614.10	LEASE 7/25/23-10/24/23	N10127641	MAINTENANCE AGREEMENT	N
14347	QUADIENT INC.		614.10				
				1 Transactions			
18440	READITECH IT SOLUTIONS						
288	01-220-000-0000-6263		247.58-	CREDIT ON ACCT		COMPUTER SERVICES & SUPPLIES	N
287	01-220-000-0000-6263		876.00	IT GLOBAL CARE/OCT	301095	COMPUTER SERVICES & SUPPLIES	N

Pennington County Financial System



Danielle
10/9/23 1:04PM

Audit List for Board **COMMISSIONER'S VOUCHERS ENTRIES**

1 County Revenue

Vendor No.	Name Account/Formula	Rpt Accr	Amount	Warrant Description Service Dates	Invoice # Paid On Bhf #	Account/Formula Description On Behalf of Name	1099
284	01-201-000-0000-6210		127.35	HOSTED EXCHANGE-OCT	301108	E-MAIL SERVICES	N
285	01-201-000-0000-6210		74.00	POP EMAIL - OCT	301108	E-MAIL SERVICES	N
286	01-201-000-0000-6210		180.44	EMAIL ARCHIVING-OCT	301108	E-MAIL SERVICES	N
283	01-201-000-0000-6300		236.25	HOSTED OFFICE APPS-OCT	301108	REPAIRS & MAINTENANCE	N
282	01-220-000-0000-6263		66.00	CYBER SECURITY-FIREWALL MONITA	301289	COMPUTER SERVICES & SUPPLIES	N
18440	READITECH IT SOLUTIONS		1,312.46	7 Transactions			
18311	REGENTS OF THE UNIVERSITY OF MN						
15	01-601-000-0000-6837		19,670.25	4-H EDUCATOR MOA JULY-SEPT	300032937	REFUNDS & REIMBURSEMENTS	N
18311	REGENTS OF THE UNIVERSITY OF MN		19,670.25	1 Transactions			
999999997	ROOD/KRISTI						
194	01-132-000-0000-6330		113.75	HOITEL - ST CLOUD - MDRA		TRAVEL & EXPENSE	N
193	01-132-000-0000-6330		306.54	MILEAGE - MDRA - ST CLOUD	468 MILES	TRAVEL & EXPENSE	N
999999997	ROOD/KRISTI		420.29	2 Transactions			
19369	SANFORD PATIENT FINANCIAL SERVICES						
83	01-251-000-0000-6255		201.60	DR 4946	172341418	MEDICAL - LOCAL	6
84	01-251-000-0000-6255		119.28	DR 4958	172598992	MEDICAL - LOCAL	6
85	01-251-000-0000-6255		966.08	DR 4957	172609042	MEDICAL - LOCAL	6
82	01-251-000-0000-6255		70.72	DR 4957	173013015	MEDICAL - LOCAL	6
86	01-251-000-0000-6255		89.46	DR 4892	173320676	MEDICAL - LOCAL	6
19369	SANFORD PATIENT FINANCIAL SERVICES		1,447.14	5 Transactions			
19356	SAYLER DDS/BENJAMIN A						
63	01-251-000-0000-6255		520.00	EXTRACTION 4405	8/22/23	MEDICAL - LOCAL	6
19356	SAYLER DDS/BENJAMIN A		520.00	1 Transactions			
19319	SEACHANGE						
4	01-061-000-0000-6401		209.32	ELECTION ENVELOPES/BALLOT STOC	INV020366	SUPPLIES-ELECTION	N
195	01-061-000-0000-6401		330.39	ELECTION ENVELOPES	INV020558	SUPPLIES-ELECTION	N
19319	SEACHANGE		539.71	2 Transactions			
19359	SIRCHIE ACQUISITION COMPANY LLC						
24	01-201-000-0000-6401		255.75	FENTANYL TEST KITS	0611483-IN	SUPPLIES	N
19359	SIRCHIE ACQUISITION COMPANY LLC		255.75	1 Transactions			
19547	SKILLET KITCHEN						
68	01-251-000-0000-6427		5,789.89	INMATE MEALS 8/21/23-8/27/23	4931	JAIL MEALS	N
69	01-251-000-0000-6427		3,323.02	INMATE MEALS 8/28/23-8/31/23	5028	JAIL MEALS	N

Pennington County Financial System



Danielle
10/9/23 1:04PM

Audit List for Board **COMMISSIONER'S VOUCHERS ENTRIES**

Page 9

1 County Revenue

Vendor No.	Name Account/Formula	Rpt Accr	Amount	Warrant Description Service Dates	Invoice # Paid On Bhf #	Account/Formula Description On Behalf of Name	1099
70	01-251-000-0000-6427		2,662.45	INMATE MEALS 9/1/23-9/3/23	5029	JAIL MEALS	N
71	01-251-000-0000-6427		6,145.77	INMATE MEALS 9/4/23-9/10/23	5128	JAIL MEALS	N
72	01-251-000-0000-6427		6,064.76	INMATE MEALS 9/11/23-9/17/23	5187	JAIL MEALS	N
19547	SKILLET KITCHEN		23,985.89	5 Transactions			
19577	SOURDIF/ROY						
11	01-003-000-0000-6330		229.25	SEPT MILEAGE - 350 MILES@ .655		TRAVEL & EXPENSE	N
12	01-003-000-0000-6330		15.13	MEAL AMC - ALEXANDRIA	9/13/23	TRAVEL & EXPENSE	N
13	01-003-000-0000-6330		30.49	MEAL AMC - ALEXANDRIA	9/13/23	TRAVEL & EXPENSE	N
14	01-003-000-0000-6330		16.17	MEAL AMC - ALEXANDRIA	9/15/23	TRAVEL & EXPENSE	N
19577	SOURDIF/ROY		291.04	4 Transactions			
20027	THE TIMES						
186	01-106-000-0000-6231		314.00	JOB POSTINGS - ASSESSOR CLERK		PUBLISHING - ASSESSOR	N
185	01-106-000-0000-6401		340.00	2500 DOOR HANGERS		SUPPLIES	N
181	01-003-000-0000-6231		373.23	PROCEEDINGS OF 8/22	281	PUBLISHING - BOARD	N
162	01-251-000-0000-6801		69.00	1 WK AD WATCH/CORRECTIONS	284	MISCELLANEOUS EXPENSE - JAIL	N
163	01-251-000-0000-6801		57.00	1 WK AD TIMES/CORRECTIONS	284	MISCELLANEOUS EXPENSE - JAIL	N
164	01-251-000-0000-6801		10.00	INTERNET JOB PAGE	284	MISCELLANEOUS EXPENSE - JAIL	N
20027	THE TIMES		1,163.23	6 Transactions			
23303	THOMSON REUTERS/WEST PAYMENT CEN						
17	01-016-000-0000-6242		410.92	SEPT SUBSCRIPTIONS	848962562	SUBSCRIPTIONS - LAW LIBRARY	N
221	01-016-000-0000-6242		1,105.24	SEPT WESTLAW ACCESS	849032443	SUBSCRIPTIONS - LAW LIBRARY	N
220	01-091-000-0000-6240		817.82	SEPT WESTLAW ACCESS	849040209	SUBSCRIPTIONS	N
52	01-091-000-0000-6240		78.21	OCTOBER SUBSCRIPTIONS	849112174	SUBSCRIPTIONS	N
23303	THOMSON REUTERS/WEST PAYMENT CEN		2,412.19	4 Transactions			
20047	THRIFTY WHITE PHARMACY						
160	01-251-000-0000-6255		1,465.31-	CREDITS APPLIED TO 066142		MEDICAL - LOCAL	N
130	01-251-000-0000-6255		38.44	PRESCRIPTION 4701	11301	MEDICAL - LOCAL	N
129	01-251-000-0000-6255		112.52	PRESCRIPTION 4537	11329	MEDICAL - LOCAL	N
142	01-251-000-0000-6255		4.29	PRESCRIPTION 4911	11575	MEDICAL - LOCAL	N
158	01-251-000-0000-6255		12.57	PRESCRIPTION 4792	13915	MEDICAL - LOCAL	N
105	01-251-000-0000-6255		3.99	PRESCRIPTION 4957	14492	MEDICAL - LOCAL	N
123	01-251-000-0000-6255		23.94	PRESCRIPTION 4504	15384	MEDICAL - LOCAL	N
151	01-251-000-0000-6255		20.55	PRESCRIPTION 4877	25580	MEDICAL - LOCAL	N
145	01-251-000-0000-6255		84.96	PRESCRIPTION 4056	27341	MEDICAL - LOCAL	N
155	01-251-000-0000-6256		64.10	PRESCRIPTION 4370	29292	MEDICAL - REIMBURSED	N
161	01-251-000-0000-6255		17.17	ZZZ/LAW ENFORCEMENT	40109	MEDICAL - LOCAL	N

Pennington County Financial System



Danielle
10/9/23 1:04PM

Audit List for Board COMMISSIONER'S VOUCHERS ENTRIES

Page 10

1 County Revenue

Vendor No.	Name Account/Formula	Rpt Accr	Amount	Warrant Description Service Dates	Invoice # Paid On Bhf #	Account/Formula Description On Behalf of Name	1099
141	01-251-000-0000-6256		23.94	PRESCRIPTION 4058	46892	MEDICAL - REIMBURSED	N
148	01-251-000-0000-6255		14.58	PRESCRIPTION 4912	56456	MEDICAL - LOCAL	N
110	01-251-000-0000-6255		10.88	PRESCRIPTION 4946	58220	MEDICAL - LOCAL	N
106	01-251-000-0000-6255		3.99	PRESCRIPTION 4932	61851	MEDICAL - LOCAL	N
132	01-251-000-0000-6256		285.65	PRESCRIPTION 4979	62427	MEDICAL - REIMBURSED	N
128	01-251-000-0000-6256		71.82	PRESCRIPTION 4755	62625	MEDICAL - REIMBURSED	N
149	01-251-000-0000-6255		23.94	PRESCRIPTION 4274	63535	MEDICAL - LOCAL	N
101	01-251-000-0000-6255		36.33	PRESCRIPTION 4845	63981	MEDICAL - LOCAL	N
150	01-251-000-0000-6256		3.99	PRESCRIPTION 4470	6610	MEDICAL - REIMBURSED	N
114	01-251-000-0000-6256		4.79	PRESCRIPTION 4937	66141	MEDICAL - REIMBURSED	N
146	01-251-000-0000-6255		4,911.98	PRESCRIPTION 4539	66142	MEDICAL - LOCAL	N
157	01-251-000-0000-6256		15.97	PRESCRIPTION 4771	67149	MEDICAL - REIMBURSED	N
122	01-251-000-0000-6256		4.79	PRESCRIPTION 4982	67281	MEDICAL - REIMBURSED	N
107	01-251-000-0000-6255		23.05	PRESCRIPTION 4791	67414	MEDICAL - LOCAL	N
156	01-251-000-0000-6256		3.99	PRESCRIPTION 4700	67552	MEDICAL - REIMBURSED	N
116	01-251-000-0000-6256		27.93	PRESCRIPTION 3949	67591	MEDICAL - REIMBURSED	N
109	01-251-000-0000-6256		15.96	PRESCRIPTION 4788	67863	MEDICAL - REIMBURSED	N
125	01-251-000-0000-6256		27.93	PRESCRIPTION 4310	68026	MEDICAL - REIMBURSED	N
136	01-251-000-0000-6256		117.21	PRESCRIPTION 4405	68099	MEDICAL - REIMBURSED	N
140	01-251-000-0000-6256		108.14	PRESCRIPTION 4369	68121	MEDICAL - REIMBURSED	N
121	01-251-000-0000-6256		16.96	PRESCRIPTION 4860	68172	MEDICAL - REIMBURSED	N
153	01-251-000-0000-6256		174.54	PRESCRIPTION 4513	68252	MEDICAL - REIMBURSED	N
131	01-251-000-0000-6256		31.92	PRESCRIPTION 4522	68283	MEDICAL - REIMBURSED	N
139	01-251-000-0000-6255		8.88	PRESCRIPTION 4753	68370	MEDICAL - LOCAL	N
97	01-251-000-0000-6256		45.90	PRESCRIPTION 4639	68424	MEDICAL - REIMBURSED	N
96	01-251-000-0000-6255		158.10	PRESCRIPTION 4716	68484	MEDICAL - LOCAL	N
135	01-251-000-0000-6255		4.29	PRESCRIPTION 4454	68491	MEDICAL - LOCAL	N
104	01-251-000-0000-6256		7.98	PRESCRIPTION 4901/4945	68499	MEDICAL - REIMBURSED	N
108	01-251-000-0000-6256		4.79	PRESCRIPTION 4724	68512	MEDICAL - REIMBURSED	N
134	01-251-000-0000-6256		3.99	PRESCRIPTION 4733	68516	MEDICAL - REIMBURSED	N
94	01-251-000-0000-6256		10.38	PRESCRIPTION 4727	68530	MEDICAL - REIMBURSED	N
127	01-251-000-0000-6256		7.98	PRESCRIPTION 4723/4900	68534	MEDICAL - REIMBURSED	N
99	01-251-000-0000-6256		15.96	PRESCRIPTION 4757	68535	MEDICAL - REIMBURSED	N
124	01-251-000-0000-6256		3.99	PRESCRIPTION 4774	68554	MEDICAL - REIMBURSED	N
112	01-251-000-0000-6256		7.98	PRESCRIPTION 4759	68561	MEDICAL - REIMBURSED	N
119	01-251-000-0000-6256		75.91	PRESCRIPTION 4748	68576	MEDICAL - REIMBURSED	N
115	01-251-000-0000-6255		7.98	PRESCRIPTION 4802	68577	MEDICAL - LOCAL	N
113	01-251-000-0000-6256		15.96	PRESCRIPTION 4789	68578	MEDICAL - REIMBURSED	N
95	01-251-000-0000-6256		21.85	PRESCRIPTION 4794	68579	MEDICAL - REIMBURSED	N

Pennington County Financial System



Danielle
10/9/23 1:04PM

Audit List for Board **COMMISSIONER'S VOUCHERS ENTRIES**

1 County Revenue

Vendor No.	Name Account/Formula	Rpt Accr	Amount	Warrant Description Service Dates	Invoice # Paid On Bhf #	Account/Formula Description On Behalf of Name	1099
98	01-251-000-0000-6256		15.96	PRESCRIPTION 4796	68582	MEDICAL - REIMBURSED	N
117	01-251-000-0000-6256		16.56	PRESCRIPTION 4685	68583	MEDICAL - REIMBURSED	N
154	01-251-000-0000-6256		46.29	PRESCRIPTION 4818	68594	MEDICAL - REIMBURSED	N
138	01-251-000-0000-6256		7.98	PRESCRIPTION 4844	68608	MEDICAL - REIMBURSED	N
133	01-251-000-0000-6256		3.99	PRESCRIPTION 4851	68618	MEDICAL - REIMBURSED	N
159	01-251-000-0000-6256		210.18	PRESCRIPTION 4819	68624	MEDICAL - REIMBURSED	N
147	01-251-000-0000-6256		5.29	PRESCRIPTION 4890	68635	MEDICAL - REIMBURSED	N
120	01-251-000-0000-6256		49.38	PRESCRIPTION 4892	68646	MEDICAL - REIMBURSED	N
126	01-251-000-0000-6256		39.33	PRESCRIPTION 4815	68650	MEDICAL - REIMBURSED	N
102	01-251-000-0000-6256		25.15	PRESCRIPTION 4862	68651	MEDICAL - REIMBURSED	N
103	01-251-000-0000-6256		6.19	PRESCRIPTION 4889	68654	MEDICAL - REIMBURSED	N
143	01-251-000-0000-6255		6.19	PRESCRIPTION 4880	68655	MEDICAL - LOCAL	N
137	01-251-000-0000-6256		12.37	PRESCRIPTION 4864	68662	MEDICAL - REIMBURSED	N
118	01-251-000-0000-6256		15.96	PRESCRIPTION 4928	68664	MEDICAL - REIMBURSED	N
93	01-251-000-0000-6256		23.94	PRESCRIPTION 4908	68676	MEDICAL - REIMBURSED	N
152	01-251-000-0000-6256		27.93	PRESCRIPTION 4354	68682	MEDICAL - REIMBURSED	N
100	01-251-000-0000-6256		8.48	PRESCRIPTION 4962	68713	MEDICAL - REIMBURSED	N
144	01-251-000-0000-6256		23.94	PRESCRIPTION 4966	68717	MEDICAL - REIMBURSED	N
111	01-251-000-0000-6256		7.98	PRESCRIPTION 4942	68730	MEDICAL - REIMBURSED	N
20047	THRIFTY WHITE PHARMACY		5,832.51	69 Transactions			
11039	TRF RADIO						
165	01-251-000-0000-6801		75.00	NOW HIRING - CORRECTIONS	34475-2	MISCELLANEOUS EXPENSE - JAIL	N
11039	TRF RADIO		75.00	1 Transactions			
20020	TRI-COUNTY COMMUNITY CORRECTIONS						
66	01-251-000-0000-6801		1,705.00	INMATE HOUSING- AUGUST/K. COTA	INV03	MISCELLANEOUS EXPENSE - JAIL	N
67	01-251-000-0000-6801		36.33	HEALTH EXPENSES	INV03	MISCELLANEOUS EXPENSE - JAIL	N
20020	TRI-COUNTY COMMUNITY CORRECTIONS		1,741.33	2 Transactions			
20460	TRUE NORTH EQUIPMENT						
36	01-111-000-0000-6300		78.43	OIL & FILTER FOR JD TRACTOR	10412930	REPAIRS & MAINTENANCE	N
20460	TRUE NORTH EQUIPMENT		78.43	1 Transactions			
22301	VISUALGOV SOLUTIONS, LLC						
201	01-041-000-0000-6852		40.00	E-CHECK FEES JULY-SEPT	JS-5322	E-CHECK CHARGES	N
22301	VISUALGOV SOLUTIONS, LLC		40.00	1 Transactions			

1 Fund Total: **261,915.65** **County Revenue** **53 Vendors** **237 Transactions**

Pennington County Financial System



Danielle
10/9/23 1:04PM

Audit List for Board **COMMISSIONER'S VOUCHERS ENTRIES**

Page 12

3 Road & Bridge

Vendor No.	Name Account/Formula	Rpt Accr	Amount	Warrant Description Service Dates	Invoice # Paid On Bhf #	Account/Formula Description On Behalf of Name	1099
280	1011 ACE HARDWARE 03-330-000-0000-6554		20.57	DRILL BITS		ENGINEERING & SURVEYING SUPPLI	N
	1011 ACE HARDWARE		20.57	1 Transactions			
279	1350 ARAMARK UNIFORM SERVICES 03-320-000-0000-6262		1,080.48	SHOP 500 RUGS - SEPT		OTHER SERVICES	N
	1350 ARAMARK UNIFORM SERVICES		1,080.48	1 Transactions			
273	1364 AUTO VALUE 03-350-000-0000-6556		11.99	FUNNEL		SHOP SUPPLIES	N
275	03-350-000-0000-6556		4.99	TUBE		SHOP SUPPLIES	N
276	03-350-000-0000-6556		59.98	WIRE		SHOP SUPPLIES	N
277	03-350-000-0000-6556		20.82	FILTER		SHOP SUPPLIES	N
278	03-350-000-0000-6556		35.98	PERMATEX, RAGS		SHOP SUPPLIES	N
271	03-350-000-0000-6564		74.92	FUSES, ORING, GASKETS		EQUIPMENT REPAIR PARTS	N
272	03-350-000-0000-6564		115.95	SEAL, HUB OIL, CHAMBER		EQUIPMENT REPAIR PARTS	N
274	03-350-000-0000-6564		22.88	MUD FLAP, FILTER, BULB		EQUIPMENT REPAIR PARTS	N
281	03-350-000-0000-6564		33.98	FUSES		EQUIPMENT REPAIR PARTS	N
	1364 AUTO VALUE		381.49	9 Transactions			
270	6315 FALLS RADIATOR SERVICE, Inc. DBA 03-350-000-0000-6564		429.74	FIX AC		EQUIPMENT REPAIR PARTS	N
	6315 FALLS RADIATOR SERVICE, Inc. DBA		429.74	1 Transactions			
267	6306 FLEET DISTRIBUTING 03-350-000-0000-6556		19.99	FLY SPRAY		SHOP SUPPLIES	N
268	03-350-000-0000-6556		65.99	GAS HOSE		SHOP SUPPLIES	N
269	03-350-000-0000-6556		11.99	BROOM		SHOP SUPPLIES	N
	6306 FLEET DISTRIBUTING		97.97	3 Transactions			
265	6340 FORKS FREIGHTLINER 03-350-000-0000-6564		1,321.45	FIX A/C		EQUIPMENT REPAIR PARTS	N
266	03-350-000-0000-6564		40.99	REPAIR PART UNIT 244		EQUIPMENT REPAIR PARTS	N
	6340 FORKS FREIGHTLINER		1,362.44	2 Transactions			
264	7304 GARRY/JOE 03-350-000-0000-6560		200.00	FUEL FOR SEMI		GAS & DIESEL	N
	7304 GARRY/JOE		200.00	1 Transactions			
	7384 GOPHER STATE ONE CALL						

Pennington County Financial System



Danielle
10/9/23 1:04PM

3 Road & Bridge

Audit List for Board COMMISSIONER'S VOUCHERS ENTRIES

Page 13

Vendor No.	Name Account/Formula	Rpt Accr	Amount	Warrant Description Service Dates	Invoice # Paid On Bhf #	Account/Formula Description On Behalf of Name	1099
263	03-320-000-0000-6240		1.35	EMAIL TICKETS		SUBSCRIPTIONS	N
	7384 GOPHER STATE ONE CALL		1.35		1 Transactions		
	12302 LOCATORS & SUPPLIES INC						
262	03-350-000-0000-6428		12.22	SHIPPING CHARGES		SAFETY EQUIPMENT	N
	12302 LOCATORS & SUPPLIES INC		12.22		1 Transactions		
	13302 M-R SIGN CO, INC						
260	03-350-000-0000-6551		1,362.20	ANCHORS		SIGNS	N
261	03-350-000-0000-6551		78.81	911 RESIDENTIAL SIGNS		SIGNS	N
	13302 M-R SIGN CO, INC		1,441.01		2 Transactions		
	13498 MARCO TECHNOLOGIES LLC						
259	03-320-000-0000-6301		38.21	COPY MACHINE - OCT	INV11693236	MAINTENANCE AGREEMENT	N
	13498 MARCO TECHNOLOGIES LLC		38.21		1 Transactions		
	14324 NAPA AUTO PARTS						
255	03-350-000-0000-6556		39.99	CLEANING WANDS		SHOP SUPPLIES	N
256	03-350-000-0000-6556		43.08	BRAKE CLEANER		SHOP SUPPLIES	N
257	03-350-000-0000-6556		48.16	SEALANT, ANTI SEIZE		SHOP SUPPLIES	N
258	03-350-000-0000-6556		44.13	BLO GUN		SHOP SUPPLIES	N
	14324 NAPA AUTO PARTS		175.36		4 Transactions		
	14316 NELSON EQUIPMENT OF TRF INC						
254	03-350-000-0000-6564		84.76	HOSES		EQUIPMENT REPAIR PARTS	N
	14316 NELSON EQUIPMENT OF TRF INC		84.76		1 Transactions		
	14027 NELSON/BEN						
225	03-350-000-0000-6330		23.58	MILEAGE RANDOM TESTING-36 MILE		TRAVEL & EXPENSE	N
	14027 NELSON/BEN		23.58		1 Transactions		
	14440 NORTHDALE OIL INC.						
252	03-350-000-0000-6560		3,101.43	GAS & DIESEL		GAS & DIESEL	N
253	03-350-000-0000-6560		3,685.71	GAS & DIESEL		GAS & DIESEL	N
	14440 NORTHDALE OIL INC.		6,787.14		2 Transactions		
	14312 NORTHWEST POWER SYSTEMS						
251	03-350-000-0000-6556		92.10	HOSE, FITTING, COUPLING		SHOP SUPPLIES	N
249	03-350-000-0000-6564		21.58	HOSES		EQUIPMENT REPAIR PARTS	N
250	03-350-000-0000-6564		418.50	O RINGS, TIE ROD		EQUIPMENT REPAIR PARTS	N

Pennington County Financial System



Danielle
10/9/23 1:04PM

Audit List for Board **COMMISSIONER'S VOUCHERS ENTRIES**

Page 14

3 Road & Bridge

Vendor No.	Name	Accr	Rpt	Amount	Warrant Description	Service Dates	Invoice #	Account/Formula Description	1099
No.	Account/Formula						Paid On Bhf #	On Behalf of Name	
	14312 NORTHWEST POWER SYSTEMS			532.18		3 Transactions			
248	16419 PRECISE MRM LLC								
	03-350-000-0000-6564			330.00	MONTHLY GPS - AUGUST		IN200-1044752	EQUIPMENT REPAIR PARTS	N
	16419 PRECISE MRM LLC			330.00		1 Transactions			
247	17430 QUALITY FLOW SYSTEMS, INC.								
	03-350-000-0000-6566			603.00	REPAIR LIFT STATION GOODRIDGE		45618	ROAD RECONSTRUCTION	N
	17430 QUALITY FLOW SYSTEMS, INC.			603.00		1 Transactions			
246	17002 QUILL CORPORATION								
	03-320-000-0000-6401			81.58	FASTENERS, DIVIDERS		34698793	SUPPLIES	N
245	03-320-000-0000-6401			139.96	COPY PAPER, FOLDERS, LEDGER		34709251	SUPPLIES	N
	17002 QUILL CORPORATION			221.54		2 Transactions			
237	18440 READITECH IT SOLUTIONS								
	03-320-000-0000-6202			67.00	READIVOICE-OCT			TELEPHONE	N
238	03-320-000-0000-6263			40.00	BACK UP MANAGER - OCT			COMPUTER SERVICES	N
239	03-320-000-0000-6263			61.25	HOSTED OFFICE - OCT			COMPUTER SERVICES	N
240	03-320-000-0000-6263			25.47	HOSTED EXCHANGE - OCT			COMPUTER SERVICES	N
241	03-320-000-0000-6263			12.00	POP EMAIL - OCT			COMPUTER SERVICES	N
242	03-320-000-0000-6263			31.23	EMAIL ARCHIVING - OCT			COMPUTER SERVICES	N
243	03-320-000-0000-6263			4.60	MICROSOFT TEAMS - OCT			COMPUTER SERVICES	N
	18440 READITECH IT SOLUTIONS			241.55		7 Transactions			
236	18357 RINKE NOONAN								
	03-330-000-0000-6261			200.00	RETAINER DRAINAGE ISSUES			CONSULTING & LEGAL SERVICES	N
	18357 RINKE NOONAN			200.00		1 Transactions			
244	18319 RT VISION, INC.								
	03-320-000-0000-6263			680.00	PERMIT FEE			COMPUTER SERVICES	N
	18319 RT VISION, INC.			680.00		1 Transactions			
230	19351 S & S TRUCK REPAIR LLC								
	03-350-000-0000-6564			210.88	SPLICERS			EQUIPMENT REPAIR PARTS	Y
231	03-350-000-0000-6564			102.52	DOT INSPECTION			EQUIPMENT REPAIR PARTS	Y
232	03-350-000-0000-6564			43.70	CHAMBER			EQUIPMENT REPAIR PARTS	Y
233	03-350-000-0000-6564			43.70	CHAMBER			EQUIPMENT REPAIR PARTS	Y
234	03-350-000-0000-6564			341.75	SEAL			EQUIPMENT REPAIR PARTS	Y
235	03-350-000-0000-6564			100.48	TIRE SAVER			EQUIPMENT REPAIR PARTS	Y

Pennington County Financial System



Danielle
10/9/23 1:04PM

Audit List for Board **COMMISSIONER'S VOUCHERS ENTRIES**

Page 15

3 Road & Bridge

Vendor No.	Name Account/Formula	Rpt Accr	Amount	Warrant Description Service Dates	Invoice # Paid On Bhf #	Account/Formula Description On Behalf of Name	1099
19351	S & S TRUCK REPAIR LLC		843.03		6 Transactions		
229	19426 SANDAHL'S 03-350-000-0000-6564		30.00	DECALS		EQUIPMENT REPAIR PARTS	N
	19426 SANDAHL'S		30.00		1 Transactions		
228	19342 SCHENKEY INC 03-330-000-0000-6341		3,400.00	EQUIPMENT RENTAL		EQUIPMENT RENTAL	N
227	03-350-000-0000-6550		105,000.00	CRUSH GRAVEL		AGGREGATES	N
	19342 SCHENKEY INC		108,400.00		2 Transactions		
226	20309 TRUE NORTH STEEL 03-350-000-0000-6549		14,130.00	18" PIPE		CULVERTS	N
	20309 TRUE NORTH STEEL		14,130.00		1 Transactions		
3 Fund Total:			138,347.62	Road & Bridge		26 Vendors	57 Transactions

DRAFT

Pennington County Financial System



Danielle
10/9/23 1:04PM

Audit List for Board **COMMISSIONER'S VOUCHERS ENTRIES**

Page 16

32 Solid Waste Facility

Vendor No.	Name Account/Formula	Rpt Accr	Amount	Warrant Description Service Dates	Invoice # Paid On Bhf #	Account/Formula Description On Behalf of Name	1099
19324	SAFETY-KLEEN SYSTEMS, INC.						
188	32-390-000-0000-6262		10.00	USED OIL RECYCLING	92766384	OTHER SERVICES-SCORE ACCOUN	N
189	32-390-000-0000-6262		40.00	USED OIL RECYCLING	92766385	OTHER SERVICES-SCORE ACCOUN	N
187	32-390-000-0000-6262		10.00	USED OIL RECYCLING	92948727	OTHER SERVICES-SCORE ACCOUN	N
19324	SAFETY-KLEEN SYSTEMS, INC.		60.00				
				3 Transactions			
32 Fund Total:			60.00	Solid Waste Facility	1 Vendors	3 Transactions	
Final Total:			400,323.27	80 Vendors	297 Transactions		

DRAFT

Pennington County Financial System



Recap by Fund

<u>Fund</u>	<u>AMOUNT</u>	<u>Name</u>
1	261,915.65	County Revenue
3	138,347.62	Road & Bridge
32	60.00	Solid Waste Facility
All Funds	400,323.27	Total

Approved by,
.....
.....

DRAFT

Pennington County Financial System



Danielle
10/6/23 12:02PM

Audit List for Board **COMMISSIONER'S VOUCHERS ENTRIES**

Page 1

Print List in Order By: 4
1 - Fund (Page Break by Fund)
2 - Department (Totals by Dept)
3 - Vendor Number
4 - Vendor Name

Explode Dist. Formulas?: Y

Paid on Behalf Of Name
on Audit List?: N

Type of Audit List: D
D - Detailed Audit List
S - Condensed Audit List

Save Report Options?: N

DRAFT

Pennington County Financial System



Danielle
10/6/23 12:02PM
County Revenue

Audit List for Board

COMMISSIONER'S VOUCHERS ENTRIES

Page 2

Vendor No.	Name Account/Formula	Rpt Accr	Amount	Warrant Description Service Dates	Invoice # Paid On Bhf #	Account/Formula Description On Behalf of Name	1099
30	19343 LARSON/MELISSA						
	01-251-000-0000-6330		14.61	TRANSPORT MEAL REIMBURSEMENT	09/28/23	TRAVEL & EXPENSE	N
	19343 LARSON/MELISSA		14.61	1 Transactions			
	12323 LAWRENCE/BRUCE						
14	01-003-000-0000-6103		75.00	HIGHWAY MEETING	09/05/23	PER DIEMS - BOARD	N
15	01-003-000-0000-6103		100.00	BUILDING COMMITTEE/OPIOID COMM	09/07/23	PER DIEMS - BOARD	N
16	01-003-000-0000-6103		75.00	TRUEIT KICKOFF CONFERENCE CALL	09/08/23	PER DIEMS - BOARD	N
17	01-003-000-0000-6103		75.00	TECH COMMITTEE	09/11/23	PER DIEMS - BOARD	N
18	01-003-000-0000-6103		75.00	TYLER TECHNOLOGY MEETING	09/12/23	PER DIEMS - BOARD	N
19	01-003-000-0000-6103		100.00	PERSONNEL MEETING/BJORKLUND	09/13/23	PER DIEMS - BOARD	N
20	01-003-000-0000-6103		125.00	AMC - ALEXANDRIA	09/14/23	PER DIEMS - BOARD	N
21	01-003-000-0000-6103		125.00	AMC - ALEXANDRIA	09/15/23	PER DIEMS - BOARD	N
22	01-003-000-0000-6103		75.00	LAW ENFORCEMENT/CORRECTIONS	09/18/23	PER DIEMS - BOARD	N
23	01-003-000-0000-6103		75.00	AIRPORT AUTHORITY/BUDGET	09/19/23	PER DIEMS - BOARD	N
24	01-003-000-0000-6103		100.00	AIRPORT AUTHORITY/BUILDING COM	09/20/23	PER DIEMS - BOARD	N
25	01-003-000-0000-6103		100.00	CORRECTIONS INTERVIEWS/5HRS	09/21/23	PER DIEMS - BOARD	N
26	01-003-000-0000-6103		75.00	PRE-UNION NEG./PERSONNEL COMM	09/25/23	PER DIEMS - BOARD	N
27	01-003-000-0000-6103		100.00	HWY DEPT/LELS NEG/AFSCME	09/26/23	PER DIEMS - BOARD	N
28	01-003-000-0000-6103		75.00	SOLID WASTE COMMITTEE	09/27/23	PER DIEMS - BOARD	N
	12323 LAWRENCE/BRUCE		1,350.00	15 Transactions			
	14478 NELSON/SETH						
5	01-003-000-0000-6103		100.00	NCLUB - GRAND RAPIDS	09/07/23	PER DIEMS - BOARD	N
6	01-003-000-0000-6103		75.00	TECH MEETING	09/11/23	PER DIEMS - BOARD	N
7	01-003-000-0000-6103		75.00	TRANS ADVISORY COMM-WARREN	09/12/23	PER DIEMS - BOARD	N
8	01-003-000-0000-6103		125.00	AMC - ALEXANDRIA	09/13/23	PER DIEMS - BOARD	N
9	01-003-000-0000-6103		125.00	AMC - ALEXANDRIA	09/14/23	PER DIEMS - BOARD	N
10	01-003-000-0000-6103		100.00	AMC - ALEXANDRIA	09/15/23	PER DIEMS - BOARD	N
11	01-003-000-0000-6103		75.00	ICCC - OKLEE	09/25/23	PER DIEMS - BOARD	N
12	01-003-000-0000-6103		75.00	HISTORICAL SOCIETY	09/26/23	PER DIEMS - BOARD	N
13	01-003-000-0000-6103		75.00	SOLID WASTE	09/28/23	PER DIEMS - BOARD	N
	14478 NELSON/SETH		825.00	9 Transactions			
	15303 OLSON/DAVID						
29	01-251-000-0000-6330		11.83	TRANSPORT MEAL REIMBURSEMENT	09/21/23	TRAVEL & EXPENSE	N
	15303 OLSON/DAVID		11.83	1 Transactions			

Pennington County Financial System



Danielle
10/6/23 12:02PM
County Revenue

Audit List for Board

COMMISSIONER'S VOUCHERS ENTRIES

Page 3

Vendor	Name	Rpt	Warrant Description	Invoice #	Account/Formula Description	1099
No.	Account/Formula	Accr	Service Dates	Paid On Bhf #	On Behalf of Name	
16362	PETERSON/NEIL					
31	01-003-000-0000-6103		HWY COMMITTEE	09/05/23	PER DIEMS - BOARD	N
32	01-003-000-0000-6103		RED LAKE RIVER 1W1P	09/06/23	PER DIEMS - BOARD	N
33	01-003-000-0000-6103		NCLUB	09/07/23	PER DIEMS - BOARD	N
34	01-003-000-0000-6103		THIEF RIVER 1W1P	09/11/23	PER DIEMS - BOARD	N
35	01-003-000-0000-6103		MRC - AMC - ALEXANDRIA	09/13/23	PER DIEMS - BOARD	N
36	01-003-000-0000-6103		MRC - AMC - ALEXANDRIA	09/14/23	PER DIEMS - BOARD	N
37	01-003-000-0000-6103		MRC - AMC - ALEXANDRIA	09/15/23	PER DIEMS - BOARD	N
38	01-003-000-0000-6103		AIRPORT AUTHORITY	09/20/23	PER DIEMS - BOARD	N
39	01-003-000-0000-6103		NWJTC - BEMIDJI	09/21/23	PER DIEMS - BOARD	N
40	01-003-000-0000-6103		PERSONNEL COMMITTEE	09/25/23	PER DIEMS - BOARD	N
41	01-003-000-0000-6103		PERSONNEL COMMITTEE - UNION	09/26/23	PER DIEMS - BOARD	N
42	01-003-000-0000-6103		AMC - ZOOM	09/29/23	PER DIEMS - BOARD	N
16362	PETERSON/NEIL		1,100.00		12 Transactions	
19577	SOURDIF/ROY					
1	01-003-000-0000-6103		AMC - ALEXANDRIA	09/13/23	PER DIEMS - BOARD	N
2	01-003-000-0000-6103		AMC - ALEXANDRIA	09/14/23	PER DIEMS - BOARD	N
3	01-003-000-0000-6103		AMC - ALEXANDRIA	09/15/23	PER DIEMS - BOARD	N
4	01-003-000-0000-6103		LIBRARY & NWRL EXEC BOARD	09/21/23	PER DIEMS - BOARD	N
19577	SOURDIF/ROY		425.00		4 Transactions	
Final Total			3,726.44		6 Vendors	42 Transactions

Pennington County Financial System



Recap by Fund

<u>Fund</u>	<u>AMOUNT</u>	<u>Name</u>
1	3,726.44	County Revenue
All Funds	3,726.44	Total

Approved by,

.....

.....

DRAFT

December 2022 version

Environmental Assessment Worksheet

This most recent Environmental Assessment Worksheet (EAW) form and guidance documents are available at the Environmental Quality Board's website at: <https://www.eqb.state.mn.us/> The EAW form provides information about a project that may have the potential for significant environmental effects. Guidance documents provide additional detail and links to resources for completing the EAW form.

Cumulative potential effects can either be addressed under each applicable EAW Item or can be addressed collectively under EAW Item 21.

Note to reviewers: Comments must be submitted to the RGU during the 30-day comment period following notice of the EAW in the *EQB Monitor*. Comments should address the accuracy and completeness of information, potential impacts that warrant further investigation and the need for an EIS.

1. Project title: Auditorium Demolition

2. Proposer: Pennington County

Contact person:
Title:
Address:
City, State, ZIP:
Phone:
Fax:
Email:

3. RGU: Pennington County

Contact person: Jennifer Herzberg
Title: County Auditor/Treasurer
Address: 101 North Main Avenue
City, State, ZIP: Thief River Falls, MN 56701
Phone: 218-683-7000
Fax:
Email: jmherzberg@co.pennington.mn.us

4. Reason for EAW Preparation: (check one)

Required:

- EIS Scoping
 Mandatory EAW

Discretionary:

- Citizen petition
 RGU discretion
 Proposer initiated

If EAW or EIS is mandatory give EQB rule category subpart number(s) and name(s): [The EAW is required per Minnesota Statute 4410.4300 Supb. 31. Historic Places.](#)

5. Project Location:

- County: [Pennington](#)
- City/Township: [Thief River Falls](#)
- PLS Location (¼, ¼, Section, Township, Range): [Section 33, T154N, R43W](#)
- Watershed (81 major watershed scale): [Red Lake Watershed District](#)
- GPS Coordinates: [48.117846N 096.181998W](#)
- Tax Parcel Number [2500338760](#)

At a minimum attach each of the following to the EAW:

- County map showing the general location of the project;
- U.S. Geological Survey 7.5 minute, 1:24,000 scale map indicating project boundaries (photocopy acceptable); and
- Site plans showing all significant project and natural features. Pre-construction site plan and post-construction site plan.
- List of data sources, models, and other resources (from the Item-by-Item Guidance: *Climate Adaptation and Resilience* or other) used for information about current Minnesota climate trends and how climate change is anticipated to affect the general location of the project during the life of the project (as detailed below in item 7. Climate Adaptation and Resilience).

6. Project Description:

- a. Provide the brief project summary to be published in the *EQB Monitor*, (approximately 50 words).

Pennington County is removing the building and installing a parking lot. The parking lot will provide parking to County employees and the public. The County is renovating the Government Center to house the Social Services Department adding approximately 35 additional employees to the building.

- b. Give a complete description of the proposed project and related new construction, including infrastructure needs. If the project is an expansion include a description of the existing facility. Emphasize: 1) construction, operation methods and features that will cause physical manipulation of the environment or will produce wastes, 2) modifications to existing equipment or industrial processes, 3) significant demolition, removal or remodeling of existing structures, and 4) timing and duration of construction activities.

The Project includes the demolition of a 12,325 sf building. The building was originally used for City offices, jail, and gymnasium. The City later moved its operations to another location and the building use became minimal due to ADA deficiencies and building conditions. The County acquired the building from the City and utilized it for storage. The County has leased space out to the youth hockey association for storage and the gym floor has been used for winter sports.

- c. Project magnitude:

Description	Number
Total Project Acreage	0.43 acres
Linear project length	NA
Number and type of residential units	NA
Residential building area (in square feet)	NA
Commercial building area (in square feet)	NA
Industrial building area (in square feet)	NA

Institutional building area (in square feet)	12,325 sf
Other uses – specify (in square feet)	NA
Structure height(s)	

- d. Explain the project purpose; if the project will be carried out by a governmental unit, explain the need for the project and identify its beneficiaries. [The parking lot will provide parking to County employees and the public. The County is renovating the Government Center to house the Social Services Department adding close to 40 more employees to the building.](#)
- e. Are future stages of this development including development on any other property planned or likely to happen? Yes No
If yes, briefly describe future stages, relationship to present project, timeline and plans for environmental review.
- f. Is this project a subsequent stage of an earlier project? Yes No
If yes, briefly describe the past development, timeline and any past environmental review.

7. Climate Adaptation and Resilience:

- a. Describe the climate trends in the general location of the project (see guidance: *Climate Adaptation and Resilience*) and how climate change is anticipated to affect that location during the life of the project.

[Not Applicable.](#)

- b. For each Resource Category in the table below: Describe how the project’s proposed activities and how the project’s design will interact with those climate trends. Describe proposed adaptations to address the project effects identified.

[Not Applicable.](#)

Resource Category	Climate Considerations (example text provided below is to be replaced with project-specific information)	Project Information	Adaptations
Project Design	For example, aspects of the building architecture/materials choices and site design that may negatively affect urban heat island conditions in the area considering changing climate zones, temperature trends, and potential for extended heat waves	Climate change risks and vulnerabilities identified include:	

Land Use	For example, any critical facilities (i.e. facilities necessary for public health and safety, those storing hazardous materials, or those with housing occupants who may be insufficiently mobile) that are proposed in floodplain areas and other areas identified as at risk for localized flooding; describe the risk potential considering changing precipitation and event intensity	Climate change risks and vulnerabilities identified include:	
Water Resources	Address in item 12	Address in item 12	Address in item 12
Contamination/ Hazardous Materials/Wastes	For example, how current Minnesota climate trends and anticipated climate change in the general location of the project may	Climate change risks and vulnerabilities identified include:	

Resource Category	Climate Considerations (example text provided below is to be replaced with project-specific information)	Project Information	Adaptations
	influence the potential environmental effects of generation/use/storage of hazardous waste and materials		
Fish, wildlife, plant communities, and sensitive ecological resources (rare features)	Address in item 14.	Address in item 14.	Address in item 14.

8. **Cover types:** Estimate the acreage of the site with each of the following cover types before and after development:

Cover Types	Before (acres)	After (acres)

Wetlands and shallow lakes (<2 meters deep)	0	0
Deep lakes (>2 meters deep)	0	0
Wooded/forest	0	0
Rivers/streams	0	0
Brush/Grassland	0	0
Cropland	0	0
Livestock rangeland/pastureland	0	0
Lawn/landscaping	0.11 acres	0 acres
Green infrastructure TOTAL (from table below*)	0	0
Impervious surface	0.24	0.35
Stormwater Pond (wet sedimentation basin)	0	0
Other (describe)	0	0
TOTAL	0.35	0.35

Green Infrastructure*	Before (acreage)	After (acreage)
Constructed infiltration systems (infiltration basins/infiltration trenches/ rainwater gardens/bioretention areas without underdrains/swales with impermeable check dams)	0	0
Constructed tree trenches and tree boxes	0	0
Constructed wetlands	0	0
Constructed green roofs	0	0
Constructed permeable pavements	0	0
Other (describe)	0	0
TOTAL*	0	0

<u>Trees</u>	<u>Percent</u>	<u>Number</u>
Percent tree canopy removed or number of mature trees removed during development		4
Number of new trees planted		0

9. Permits and approvals required: List all known local, state and federal permits, approvals, certifications and financial assistance for the project. Include modifications of any existing permits, governmental review of plans and all direct and indirect forms of public financial assistance including bond guarantees, Tax Increment Financing and infrastructure. *All of these final decisions are prohibited until all appropriate environmental review has been completed. See Minnesota Rules, Chapter 4410.3100.*

Unit of Government	Type of Application	Status
Thief River Falls	Demolition Permit	To be obtained

Cumulative potential effects may be considered and addressed in response to individual EAW Item Nos.10-20, or the RGU can address all cumulative potential effects in response to EAW Item No.22. If addressing cumulative effect under individual items, make sure to include information requested in EAW Item No. 21.

10. Land use:

a. Describe:

- i. Existing land use of the site as well as areas adjacent to and near the site, including parks and open space, cemeteries, trails, prime or unique farmlands.

Land use is commercial and institutional. Located within the block is the County Government Center and a Hockey Arena. The surrounding area is primarily commercial.

- ii. Plans. Describe planned land use as identified in comprehensive plan (if available) and any other applicable plan for land use, water, or resources management by a local, regional, state, or federal agency.

The future land use of the project area is a parking lot.

- iii. Zoning, including special districts or overlays such as shoreland, floodplain, wild and scenic rivers, critical area, agricultural preserves, etc.

Zoning is commercial and there are no special districts, shoreland, floodplain, scenic, or agricultural aspects to the location. The Red Lake River is located 850 feet to the east but separated by 2 blocks of commercial properties.

- iv. If any critical facilities (i.e. facilities necessary for public health and safety, those storing hazardous materials, or those with housing occupants who may be insufficiently mobile) are proposed in floodplain areas and other areas identified as at risk for localized flooding, describe the risk potential considering changing precipitation and event intensity.

Not Applicable.

- b. Discuss the project's compatibility with nearby land uses, zoning, and plans listed in Item 9a above, concentrating on implications for environmental effects.

The project will support public and employee parking at the Government Center and Hockey Arena. Currently, parking is on street or available in a publicly owned parking lot located northwest of the Hockey Arena.

- c. Identify measures incorporated into the proposed project to mitigate any potential incompatibility as discussed in Item 10b above and any risk potential.

The Project is consistent with the compatibility of the land use.

11. Geology, soils and topography/land forms:

- a. Geology - Describe the geology underlying the project area and identify and map any susceptible geologic features such as sinkholes, shallow limestone formations, unconfined/shallow aquifers, or karst conditions. Discuss any limitations of these features for the project and any effects the project could have on these features. Identify any project designs or mitigation measures to address effects to geologic features.

Not Applicable.

- b. Soils and topography - Describe the soils on the site, giving NRCS (SCS) classifications and descriptions, including limitations of soils. Describe topography, any special site conditions relating to erosion potential, soil stability or other soils limitations, such as steep slopes, highly permeable soils. Provide estimated volume and acreage of soil excavation and/or grading. Discuss impacts from project activities (distinguish between construction and operational activities) related to soils and topography. Identify measures during and after project construction to address soil limitations including stabilization, soil corrections or other measures. Erosion/sedimentation control related to stormwater runoff should be addressed in response to Item 12.b.ii.

The general soil structure consists of the following:

- A - 0 to 4 inches: loam
- AC - 4 to 24 inches: silt loam
- C - 24 to 60 inches: clay loam

Other Soil Characteristics:

- Slope: 0 to 3 percent
- Depth to restrictive feature: More than 80 inches
- Drainage class: Somewhat poorly drained
- Capacity of the most limiting layer to transmit water (Ksat): Moderately low to moderately high (0.14 to 1.42 in/hr)
- Depth to water table: About 18 to 42 inches
- Frequency of flooding: None
- Frequency of ponding: None
- Calcium carbonate, maximum content: 15 percent
- Gypsum, maximum content: 2 percent

Maximum salinity: Nonsaline to very slightly saline (0.0 to 3.9 mmhos/cm)
Sodium adsorption ratio, maximum: 2.0

- NOTE: For silica sand projects, the EAW must include a hydrogeologic investigation assessing the potential groundwater and surface water effects and geologic conditions that could create an increased risk of potentially significant effects on groundwater and surface water. Descriptions of water resources and potential effects from the project in EAW Item 12 must be consistent with the geology, soils and topography/land forms and potential effects described in EAW Item 11.

Not Applicable

12. Water resources:

a. Describe surface water and groundwater features on or near the site in a.i. and a.ii. below.

- i. Surface water - lakes, streams, wetlands, intermittent channels, and county/judicial ditches. Include any special designations such as public waters, shoreland classification and floodway/floodplain, trout stream/lake, wildlife lakes, migratory waterfowl feeding/resting lake, and outstanding resource value water. Include the presence of aquatic invasive species and the water quality impairments or special designations listed on the current MPCA 303d Impaired Waters List that are within 1 mile of the project. Include DNR Public Waters Inventory number(s), if any.

The Red Lake River is the closest surface water located 850 feet to the east.

- ii. Groundwater – aquifers, springs, seeps. Include: 1) depth to groundwater; 2) if project is within a MDH wellhead protection area; 3) identification of any onsite and/or nearby wells, including unique numbers and well logs if available. If there are no wells known on site or nearby, explain the methodology used to determine this.

No wells are located in the project area. Depth to water table is about 18 to 42 inches.

b. Describe effects from project activities on water resources and measures to minimize or mitigate the effects in Item b.i. through Item b.iv. below.

- i. Wastewater - For each of the following, describe the sources, quantities and composition of all sanitary, municipal/domestic and industrial wastewater produced or treated at the site.
 - 1) If the wastewater discharge is to a publicly owned treatment facility, identify any pretreatment measures and the ability of the facility to handle the added water and waste loadings, including any effects on, or required expansion of, municipal wastewater infrastructure.

Not Applicable.

- 2) If the wastewater discharge is to a subsurface sewage treatment systems (SSTS), describe the system used, the design flow, and suitability of site conditions for such a system. If septic systems are part of the project, describe the availability of septic disposal options within the region to handle the ongoing amounts generated as a result of the project. Consider the effects of current Minnesota climate trends and anticipated changes in rainfall frequency, intensity and amount with this discussion.

Not Applicable.

- 3) If the wastewater discharge is to surface water, identify the wastewater treatment methods and identify discharge points and proposed effluent limitations to mitigate impacts. Discuss any effects to surface or groundwater from wastewater discharges, taking into consideration how current Minnesota climate trends and anticipated climate change in the general location of the project may influence the effects.

Not Applicable.

- ii. Stormwater - Describe changes in surface hydrology resulting from change of land cover. Describe the routes and receiving water bodies for runoff from the project site (major downstream water bodies as well as the immediate receiving waters). Discuss environmental effects from stormwater discharges on receiving waters post construction including how the project will affect runoff volume, discharge rate and change in pollutants. Consider the effects of current Minnesota climate trends and anticipated changes in rainfall frequency, intensity and amount with this discussion. For projects requiring NPDES/SDS Construction Stormwater permit coverage, state the total number of acres that will be disturbed by the project and describe the stormwater pollution prevention plan (SWPPP), including specific best management practices to address soil erosion and sedimentation during and after project construction. Discuss permanent stormwater management plans, including methods of achieving volume reduction to restore or maintain the natural hydrology of the site using green infrastructure practices or other stormwater management practices. Identify any receiving waters that have construction-related water impairments or are classified as special as defined in the Construction Stormwater permit. Describe additional requirements for special and/or impaired waters.

Existing and future stormwater is collected the city storm sewers system. A nominal amount of additional stormwater will be produced by the removal of greenspace (0.11 acres) between the buildings which will become the parking lot.

- iii. Water appropriation - Describe if the project proposes to appropriate surface or groundwater (including dewatering). Describe the source, quantity, duration, use and purpose of the water use and if a DNR water appropriation permit is required. Describe any well abandonment. If connecting to an existing municipal water supply, identify the wells to be used as a water source and any effects on, or

required expansion of, municipal water infrastructure. Discuss environmental effects from water appropriation, including an assessment of the water resources available for appropriation. Discuss how the proposed water use is resilient in the event of changes in total precipitation, large precipitation events, drought, increased temperatures, variable surface water flows and elevations, and longer growing seasons. Identify any measures to avoid, minimize, or mitigate environmental effects from the water appropriation. Describe contingency plans should the appropriation volume increase beyond infrastructure capacity or water supply for the project diminish in quantity or quality, such as reuse of water, connections with another water source, or emergency connections.

Not Applicable.

iv. Surface Waters

- a) Wetlands - Describe any anticipated physical effects or alterations to wetland features such as draining, filling, permanent inundation, dredging and vegetative removal. Discuss direct and indirect environmental effects from physical modification of wetlands, including the anticipated effects that any proposed wetland alterations may have to the host watershed, taking into consideration how current Minnesota climate trends and anticipated climate change in the general location of the project may influence the effects. Identify measures to avoid (e.g., available alternatives that were considered), minimize, or mitigate environmental effects to wetlands. Discuss whether any required compensatory wetland mitigation for unavoidable wetland impacts will occur in the same minor or major watershed and identify those probable locations.

Not Applicable.

- b) Other surface waters- Describe any anticipated physical effects or alterations to surface water features (lakes, streams, ponds, intermittent channels, county/judicialditches) such as draining, filling, permanent inundation, dredging, diking, stream diversion, impoundment, aquatic plant removal and riparian alteration. Discuss direct and indirect environmental effects from physical modification of water features, taking into consideration how current Minnesota climate trends and anticipated climate change in the general location of the project may influence the effects. Identify measures to avoid, minimize, or mitigate environmental effects to surface water features, including in-water Best Management Practices that are proposed to avoid or minimize turbidity/sedimentation while physically altering the water features. Discuss how the project will change the number or type of watercraft on any water body, including current and projected watercraft usage.

Not Applicable.

13. Contamination/Hazardous Materials/Wastes:

- a. Pre-project site conditions - Describe existing contamination or potential environmental hazardson or in close proximity to the project site such as soil or ground water contamination, abandoned dumps, closed landfills, existing or abandoned storage tanks, and hazardous liquid or gas pipelines. Discuss any potential environmental effects from pre-project site conditions that would be caused or exacerbated by project construction and operation. Identify measures to avoid, minimize or mitigate adverse effects from existing contamination or potential environmental hazards. Include development of a Contingency Plan or Response Action Plan.

A Hazardous Materials Report was conducted which showed presence of Asbestos. The County is planning to hire a Certified Hazardous Materials Removal Contractor to remove the asbestos before demolition.

- b. Project related generation/storage of solid wastes - Describe solid wastes generated/stored during construction and/or operation of the project. Indicate method of disposal. Discuss potential environmental effects from solid waste handling, storage and disposal. Identify measures to avoid, minimize or mitigate adverse effects from the generation/storage of solidwaste including source reduction and recycling.

Not Applicable.

- c. Project related use/storage of hazardous materials - Describe chemicals/hazardous materials used/stored during construction and/or operation of the project including method of storage. Indicate the number, location and size of any new above or below ground tanks to store petroleum or other materials. Indicate the number, location, size and age of existing tanks on the property that the project will use. Discuss potential environmental effects from accidental spill or release of hazardous materials. Identify measures to avoid, minimize or mitigate adverse effects from the use/storage of chemicals/hazardous materials including source reduction and recycling. Include development of a spill prevention plan.

Not Applicable.

- d. Project related generation/storage of hazardous wastes - Describe hazardous wastes generated/stored during construction and/or operation of the project. Indicate method of disposal. Discuss potential environmental effects from hazardous waste handling, storage, and disposal. Identify measures to avoid, minimize or mitigate adverse effects from the generation/storage of hazardous waste including source reduction and recycling.

Not Applicable.

14. Fish, wildlife, plant communities, and sensitive ecological resources (rare features):

- a. Describe fish and wildlife resources as well as habitats and vegetation on or in near the site.

Not Applicable.

- b. Describe rare features such as state-listed (endangered, threatened or special concern) species, native plant communities, Minnesota Biological Survey Sites of Biodiversity Significance, and other sensitive ecological resources on or within close proximity to the site. Provide the license agreement number (LA-_____) and/or correspondence number (MCE _____) from which the data were obtained and attach the Natural Heritage Review letter from the DNR. Indicate if any additional habitat or species survey work has been conducted within the site and describe the results.

Not Applicable.

- c. Discuss how the identified fish, wildlife, plant communities, rare features and ecosystems may be affected by the project including how current Minnesota climate trends and anticipated climate change in the general location of the project may influence the effects. Include a discussion on introduction and spread of invasive species from the project construction and operation. Separately discuss effects to known threatened and endangered species.

Not Applicable.

- d. Identify measures that will be taken to avoid, minimize, or mitigate the adverse effects to fish, wildlife, plant communities, ecosystems, and sensitive ecological resources.

Not Applicable.

15. Historic properties:

Describe any historic structures, archeological sites, and/or traditional cultural properties on or in close proximity to the site. Include: 1) historic designations, 2) known artifact areas, and 3) architectural features. Attach letter received from the State Historic Preservation Office (SHPO). Discuss any anticipated effects to historic properties during project construction and operation. Identify measures that will be taken to avoid, minimize, or mitigate adverse effects to historic properties.

The Auditorium is on the National Register for Historic Buildings. Pennington County is considering demolition of the building based on the cost to eliminate ADA deficiencies, asbestos removal, and repairing the HVAC equipment. The County is also in need of adding additional parking spaces to accommodate staff and visitors.

16. Visual:

Describe any scenic views or vistas on or near the project site. Describe any project related visual effects such as vapor plumes or glare from intense lights. Discuss the potential visual

effects from the project. Identify any measures to avoid, minimize, or mitigate visual effects.

Not Applicable.

17. Air:

- a. Stationary source emissions - Describe the type, sources, quantities and compositions of any emissions from stationary sources such as boilers or exhaust stacks. Include any hazardous air pollutants, criteria pollutants. Discuss effects to air quality including any sensitive receptors, human health or applicable regulatory criteria. Include a discussion of any methods used to assess the project's effect on air quality and the results of that assessment. Identify pollution control equipment and other measures that will be taken to avoid, minimize, or mitigate adverse effects from stationary source emissions.

Not Applicable.

- b. Vehicle emissions - Describe the effect of the project's traffic generation on air emissions. Discuss the project's vehicle-related emissions effect on air quality. Identify measures (e.g. traffic operational improvements, diesel idling minimization plan) that will be taken to minimize or mitigate vehicle-related emissions.

Not Applicable.

- c. Dust and odors - Describe sources, characteristics, duration, quantities, and intensity of dust and odors generated during project construction and operation. (Fugitive dust may be discussed under item 17a). Discuss the effect of dust and odors in the vicinity of the project including nearby sensitive receptors and quality of life. Identify measures that will be taken to minimize or mitigate the effects of dust and odors.

Not Applicable.

18. Greenhouse Gas (GHG) Emissions/Carbon Footprint

- a. GHG Quantification: For all proposed projects, provide quantification and discussion of project GHG emissions. Include additional rows in the tables as necessary to provide project-specific emission sources. Describe the methods used to quantify emissions. If calculation methods are not readily available to quantify GHG emissions for a source, describe the process used to come to that conclusion and any GHG emission sources not included in the total calculation.

Not Applicable.

The following tables are examples; other layouts are acceptable for providing GHG quantification results

Construction Emissions

Scope	Type of Emission	Emission Sub-type	Project-related CO ₂ e Emissions (tons/year)	Calculation method(s)
Scope 1	Combustion	Mobile Equipment		
Scope 1	Land Use	Conversion		
Scope 1	Land Use	Carbon Sink		
TOTAL				

Operational Emissions

Scope	Type of Emission	Emission Sub-type	Existing facility CO ₂ e Emissions (tons/year)	Project-related CO ₂ e Emissions (tons/year)	Total CO ₂ e Emissions (tons/year)	Calculation method(s)
Scope 1	Combustion	Mobile Equipment				
Scope 1	Combustion	Stationary Equipment				
Scope 1	Combustion	Area				
Scope 1	Non-Combustion	Stationary Equipment				

Scope	Type of Emission	Emission Sub-type	Existing facility CO ₂ e Emissions (tons/year)	Project-related CO ₂ e Emissions (tons/year)	Total CO ₂ e Emissions (tons/year)	Calculation method(s)
Scope 1	Land Use	Carbon Sink				
Scope 2	Off-site Electricity	Grid-based				
Scope 2	Off-site Steam Production	Not applicable				
Scope 3	Off-site Waste Management	Area				
TOTAL						

b. GHG Assessment

- i. Describe any mitigation considered to reduce the project's GHG emissions.
- ii. Describe and quantify reductions from selected mitigation, if proposed to reduce the project's GHG emissions. Explain why the selected mitigation was preferred.
- iii. Quantify the proposed projects predicted net lifetime GHG emissions (total tons/#of years) and how those predicted emissions may affect achievement of the Minnesota Next Generation Energy Act goals and/or other more stringent state or local GHG reduction goals.

Not Applicable

19. Noise

Describe sources, characteristics, duration, quantities, and intensity of noise generated during project construction and operation. Discuss the effect of noise in the vicinity of the project including

1) existing noise levels/sources in the area, 2) nearby sensitive receptors, 3) conformance to state noise standards, and 4) quality of life. Identify measures that will be taken to minimize or mitigate the effects of noise.

Noise due to the equipment and demolition practices are expected during the demolition process. Noise generated by the demolition will occur during working hours.

20. Transportation

a. Describe traffic-related aspects of project construction and operation. Include: 1) existing and proposed additional parking spaces, 2) estimated total average daily traffic generated, 3) estimated maximum peak hour traffic generated and time of occurrence, 4) indicate source of trip generation rates used in the estimates, and 5) availability of transit and/or other alternative transportation modes.

Not Applicable.

b. Discuss the effect on traffic congestion on affected roads and describe any traffic improvements necessary. The analysis must discuss the project's impact on the regional transportation system. *If the peak hour traffic generated exceeds 250 vehicles or the total daily trips exceeds 2,500, a traffic impact study must be prepared as part of the EAW.* Use the format and procedures described in the Minnesota Department of Transportation's Access Management Manual, Chapter 5 (available at: <http://www.dot.state.mn.us/accessmanagement/resources.html>) or a similar local guidance,

Not Applicable.

c. Identify measures that will be taken to minimize or mitigate project related transportation effects.

Not Applicable.

21. Cumulative potential effects: (Preparers can leave this item blank if cumulative potential effects are addressed under the applicable EAW Items)

a. Describe the geographic scales and timeframes of the project related environmental effects that could combine with other environmental effects resulting in cumulative potential effects.

b. Describe any reasonably foreseeable future projects (for which a basis of expectation

has been laid) that may interact with environmental effects of the proposed project within the geographic scales and timeframes identified above.

- c. Discuss the nature of the cumulative potential effects and summarize any other available information relevant to determining whether there is potential for significant environmental effects due to these cumulative effects.

22. Other potential environmental effects: If the project may cause any additional environmental effects not addressed by items 1 to 19, describe the effects here, discuss the how the environment will be affected, and identify measures that will be taken to minimize and mitigate these effects.

RGU CERTIFICATION. *(The Environmental Quality Board will only accept **SIGNED** Environmental Assessment Worksheets for public notice in the EQB Monitor.)*

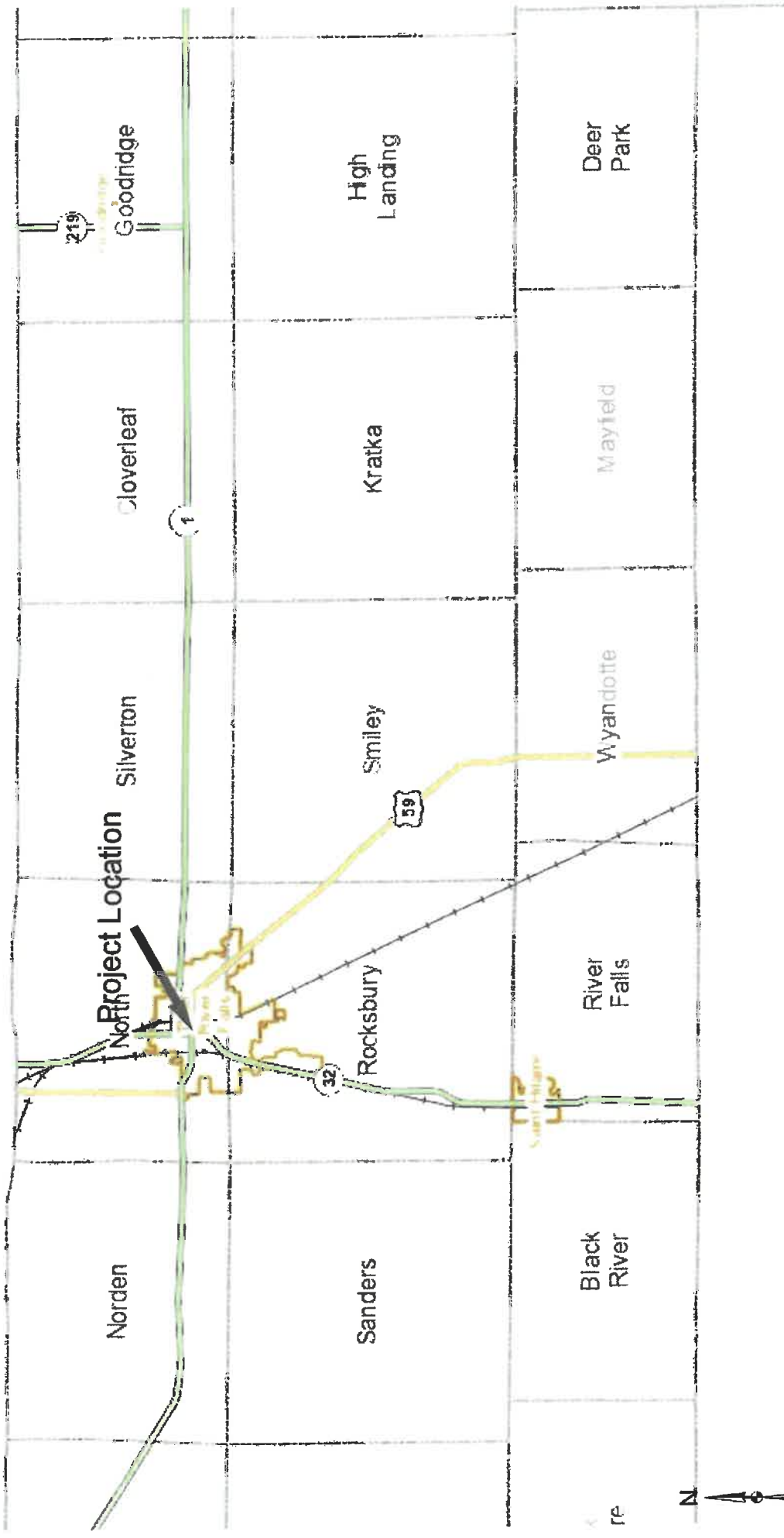
I hereby certify that:

- The information contained in this document is accurate and complete to the best of my knowledge.
- The EAW describes the complete project; there are no other projects, stages or components other than those described in this document, which are related to the project as connected actions or phased actions, as defined at Minnesota Rules, parts 4410.0200, subparts 9c and 60, respectively.
- Copies of this EAW are being sent to the entire EQB distribution list.

Signature 

Date 10-9-2023

Title Auditor - Treasurer



These data are provided on an "AS-IS" basis, without warranty of any type, expressed or implied, including but not limited to any warranty as to their performance, merchantability, or fitness for any particular purpose.

PROJECT LOCATION MAP

Pennington County

Sources: Esri, Airbus DS, USGS, NGA, NASA, CGIAR, N Robinson, NCEAS, NLS, OS, NMA, Geodatasysteisen, Rijkswaterstaat, GSA, Geoland, FEMA, Intermap and the GIS user community



1:288,895

Date: 9/18/2023

This map is not a substitute for accurate field surveys or for locating actual property lines and any adjacent features.

Minnesota



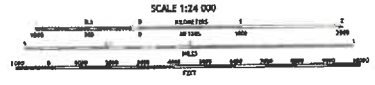
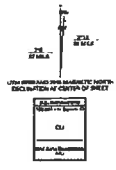
U.S. DEPARTMENT OF THE INTERIOR
U.S. GEOLOGICAL SURVEY



THIEF RIVER FALLS QUADRANGLE
MINNESOTA - PENNINGTON COUNTY
7.5-MINUTE SERIES



Produced by the United States Geological Survey
with assistance from the Minnesota Department of Natural Resources
Scale: 1:25,000
This map is not a legal document. It is intended for general informational purposes only. It is not intended to be used for legal or other purposes. The user assumes all liability for any use of this map.



ROAD CLASSIFICATION

Expressway	State Connector
Secondary Hwy	State Road
Artery	Highway
Interstate Point	US Route
	State Road



CONTOUR INTERVAL: 5 FEET
48340 NORTH
48290 WEST
The map was produced by USGS in cooperation with the National Geographic Program US Topo Project Database, 2011. A watermark of the database logo was printed in the bottom left of the map.

THIEF RIVER FALLS, MN
2019

Exhibit A—Site Plan (Demolition)



SITE PHOTOS



Southeast View



Southwest View



Northwest View



Northeast View